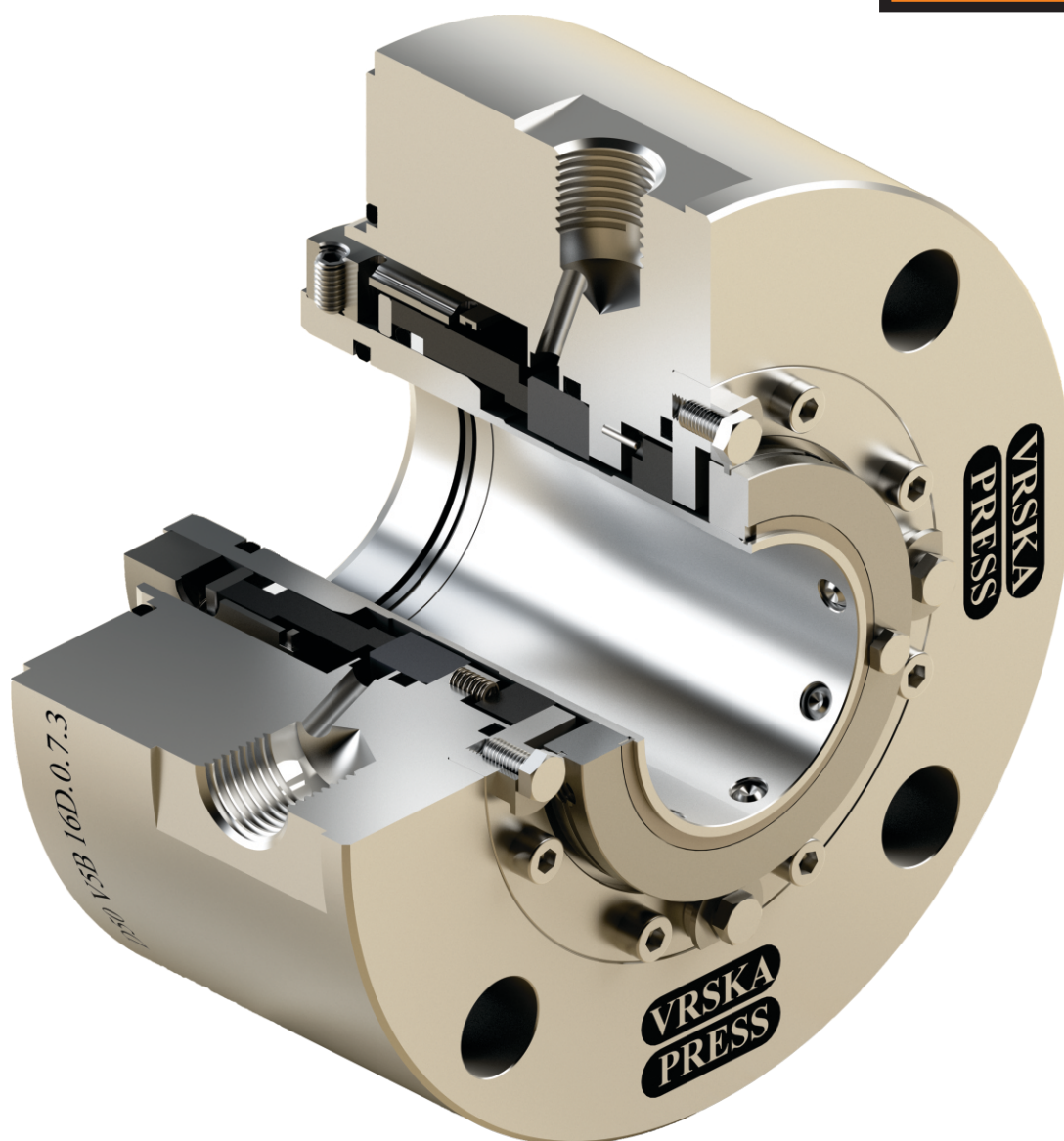


TYPE V5B 16D

API 682 Category 2 & 3, Type A, Arrangement 1



Product description:

API 682 Category 2 & 3, Type A, Arrangement 1. Type V5B 16D is reliable, high-performance, balanced single cartridge pusher-type seal with floating or segmented throttle bushing, independent of the shaft rotating direction. Designed to seal fluids in most refinery applications like crude oil products, aromatic fractionation product, chemicals...

Recommended Applications:

- Hydrocarbons (light and heavy)
- Refinery & Petrochemical industry
- Oil & gas industry
- Chemical industry
- Power plant technology
- Process pumps

Operating range:

- Shaft diameter: $D1 = 20 \dots 120 \text{ mm}$
- Pressure: $p1 = 40 \text{ bar}$
- Temperature: $t = -40^\circ\text{C} \dots +260^\circ\text{C}$
- Sliding velocity: $v_g = 23 \text{ m/s}$

Features:

- API 682 Category 2 & 3, Type A, Arrangement 1
- Easy-to-install single cartridge design
- Balanced
- Multiple springs
- Independent of the shaft rotating direction
- Floating or segmented spring-loaded carbon throttle bushing
- Integrated pumping ring available

Materials:

- Seal face: Carbon antimony impregnated, SiC
- Stationary seat: SiC, TC
- Secondary seal: NBR, EPDM, FKM, FFKM
- Spring: 1.4571, Hastelloy C
- Metal Parts: 316L
- Optional materials on request