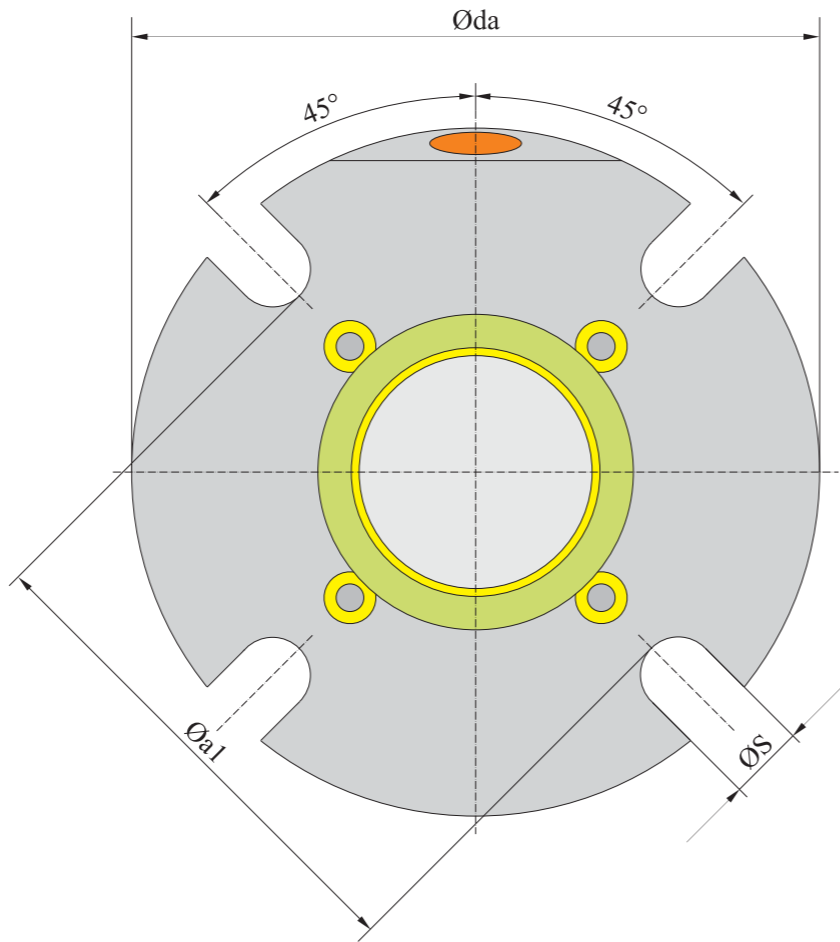
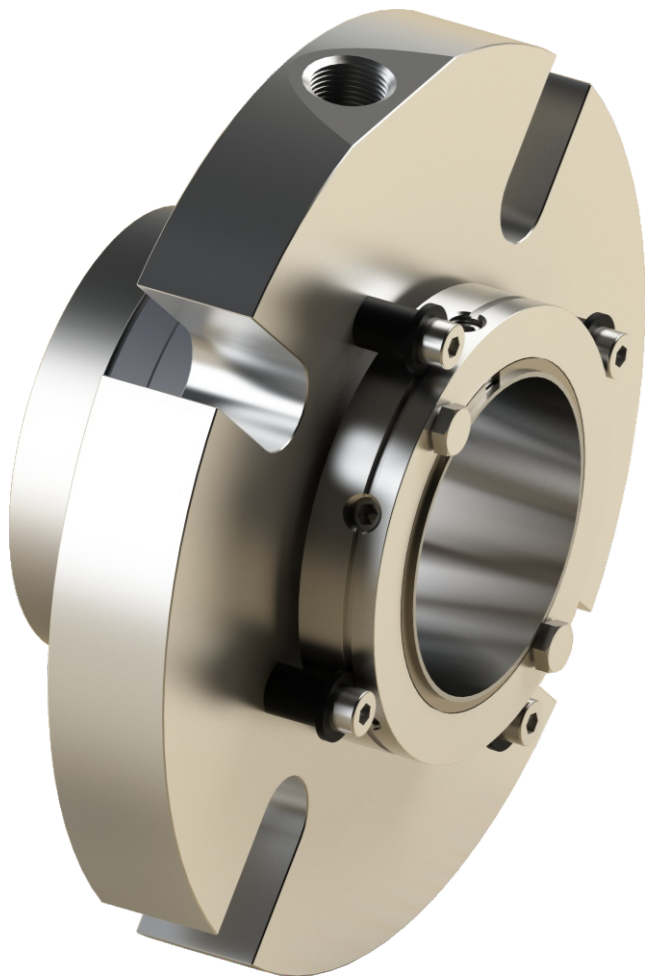




# CARTSEAL 16D.1

Single cartridge seal with machined cover



# CARTSEAL 16D

Single cartridge seals dimension table

DIMENSION TABLE (mm)

D1	D3	D4 min.	D4 max.	L1	L2	L3	L12	L13	L16	L17	Øa1	Øda	E	ØS
25	41,9	44,0	51,0	52,6	38,1	14,5	30,0	22,6	48,1	22,6	62,0	105,0	16,0	13,2
28	44,4	47,0	52,0	52,6	38,1	14,5	30,0	22,6	48,1	22,6	62,0	105,0	16,0	13,2
30	47,0	49,0	56,0	52,6	38,1	14,5	30,0	22,6	48,1	22,6	65,0	105,0	16,0	13,2
32	49,7	51,0	57,0	52,6	38,1	14,5	30,0	22,6	48,1	22,6	67,0	110,0	16,0	13,2
33	49,7	51,0	57,0	52,6	38,1	14,5	30,0	22,6	48,1	22,6	67,0	110,0	16,0	13,2
35	55,5	56,5	61,5	54,0	38,7	15,3	30,5	23,4	48,7	23,4	70,0	113,0	16,0	13,2
38	56,0	57,0	66,0	54,0	38,7	15,4	30,6	23,3	48,7	23,3	75,0	123,0	16,0	13,2
40	58,0	59,0	68,0	56,0	39,3	16,7	30,6	25,3	49,3	25,3	75,0	123,0	16,0	14,2
42	60,5	61,5	69,5	58,0	39,3	18,7	30,6	27,3	49,3	27,3	80,0	133,0	16,0	14,2
43	60,5	61,5	70,5	56,0	39,3	16,7	30,6	25,3	49,3	25,3	80,0	133,0	16,0	14,2
45	62,5	64,0	73,0	56,8	39,8	17,0	31,4	25,3	49,8	25,3	81,0	138,0	16,0	14,2
48	67,0	68,0	75,0	57,7	39,7	18,0	31,2	26,5	49,7	26,5	84,0	138,0	16,0	14,2
50	68,5	69,0	78,0	57,7	39,7	18,0	31,1	26,5	49,7	26,5	87,0	148,0	16,0	14,2
53	72,0	73,0	87,0	59,7	39,7	20,0	31,1	28,5	49,7	28,5	97,0	148,0	18,0	18,0
55	74,0	75,0	83,0	59,7	39,7	20,0	31,1	28,5	49,7	28,5	90,0	148,0	18,0	18,0
60	79,5	80,5	91,0	59,7	40,2	19,5	31,1	28,5	50,2	28,5	102,0	157,0	18,0	18,0
65	84,4	85,7	98,5	59,7	40,2	19,5	31,1	28,5	50,2	28,5	109,0	163,0	18,0	18,0
70	93,0	95,0	108,0	59,7	40,2	19,5	31,1	28,6	50,2	28,6	118,0	178,0	18,0	18,0
75	98,0	101,6	118,0	61,5	41,5	20,0	32,5	28,6	51,5	28,6	129,0	190,0	18,0	18,0
80	104,0	108,0	124,0	61,5	41,5	20,0	32,5	28,6	53,5	28,6	135,0	195,0	18,0	18,0
85	109,0	111,1	128,0	61,5	41,5	20,0	32,5	28,6	53,5	28,6	139,0	198,0	22,0	22,0
90	114,0	117,5	135,0	61,5	41,5	20,0	32,5	28,6	53,5	28,6	145,0	205,0	22,0	22,0
95	119,0	120,7	138,0	61,5	41,5	20,0	32,5	28,6	53,5	28,6	148,0	208,0	22,0	22,0
100	124,0	127,0	144,0	61,5	41,5	20,0	32,5	28,6	53,5	28,6	154,0	218,0	22,0	22,0

In the table above are dimensions of the most commonly used cartridge mechanical seals. “Vrska Press” company also produce cartridge mechanical seals for the shafts above Ø100mm. That dimensions are not indicated in the table above. For precise informations about those cartridges contact “Vrska Press” company or Your supplier.

Specifications, dimensions and informations contained herein are subject to change without notice.