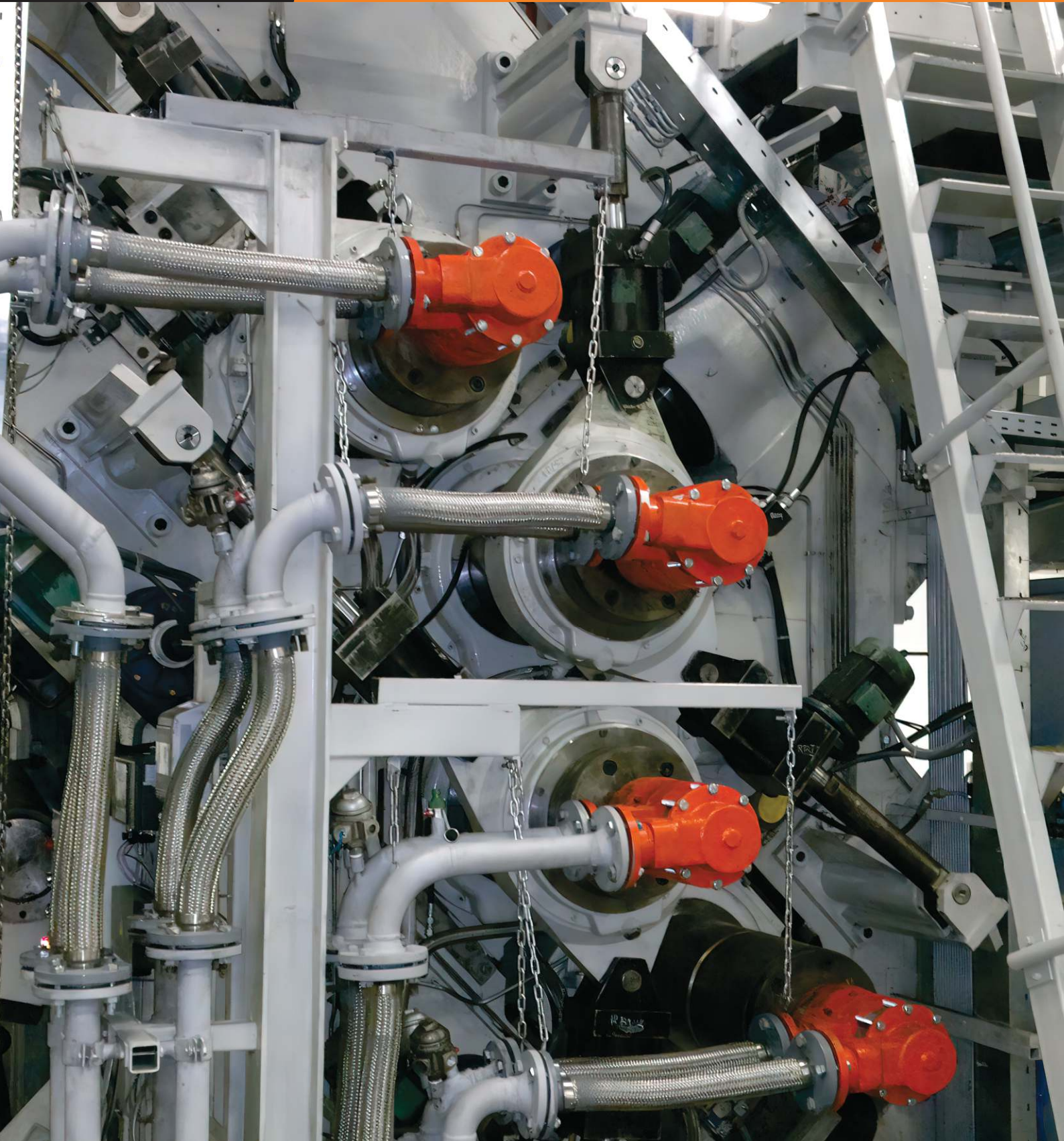




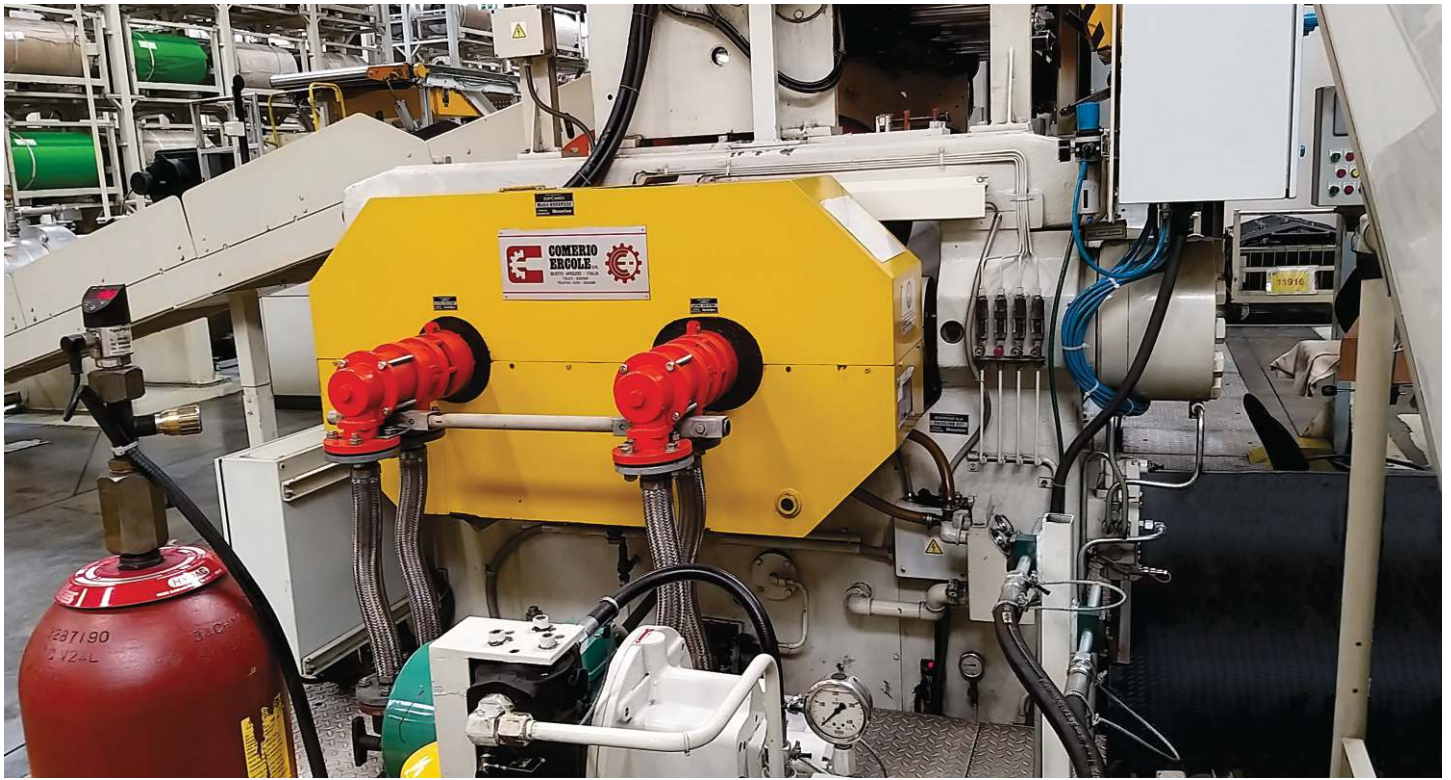
YOUR INNOVATION PARTNER

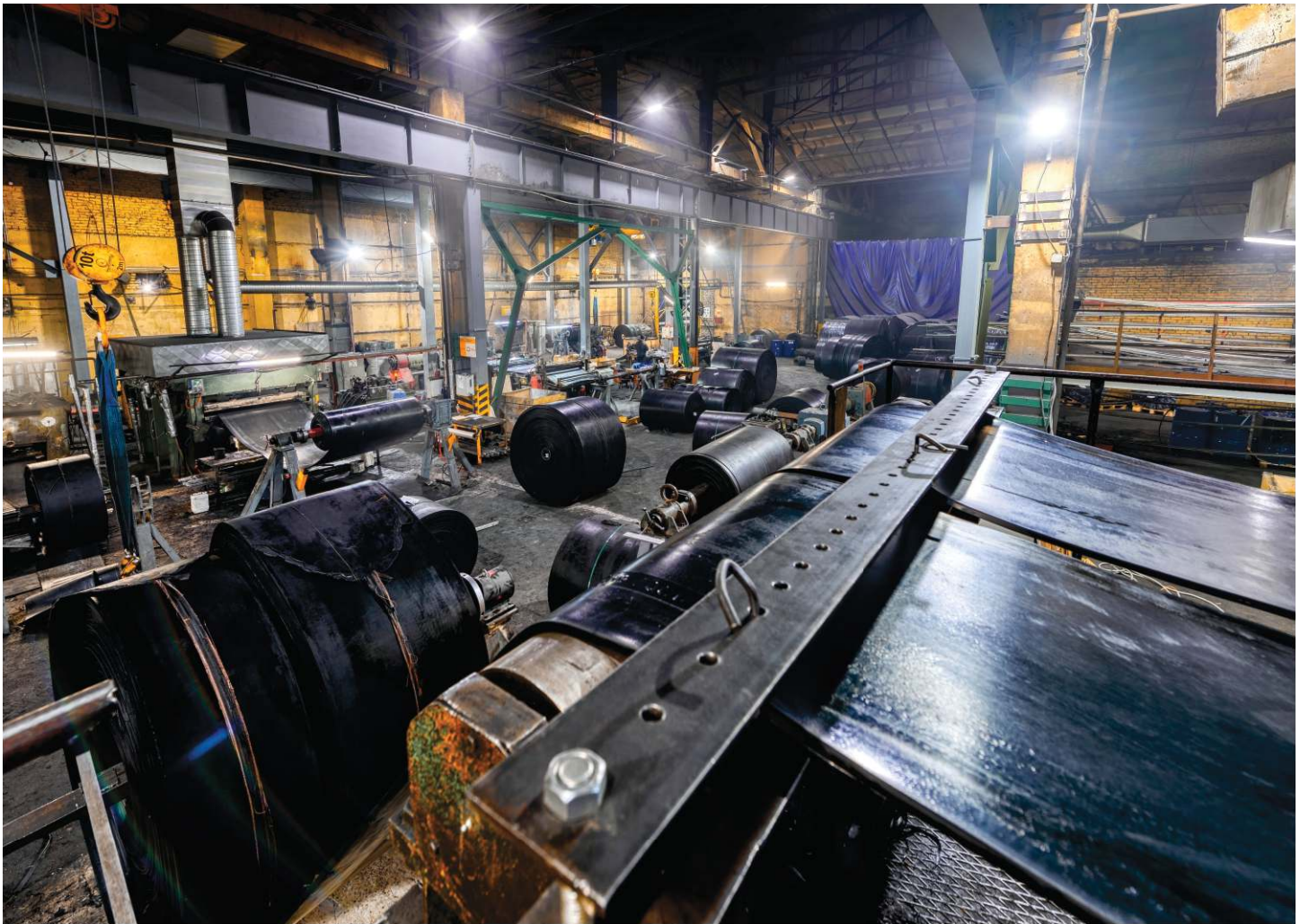
Rotary Joint Type RBGY

For Water & Steam
in the Rubber & Paper Industries



www.vrskapress.eu





Ordering instructions: 075 RBGY S 20 RH 13053

Nominal Diameter:

From ND 065 to ND 100

Type:

- Specifies rotary joints design
- Rotary joints types are specified further in design guide

Design:

S - Standard production

N - Not Standard, produced at the customers request

Flow Passage:

- 1 - Monoflow
- 2 - Duoflow (stationary syphon)
- 4 - Duoflow (rotating syphon)
- 5 - Multiflow

Lubrication:

- 0 - Yes (with grease nipple)
- 1 - No (without grease nipple)

Shaft Connection:

RH - right hand BSP (ISO 228)

LH - left hand BSP (ISO 228)

G - right hand NPT

H - left hand NPT

I - K flange (design type I)

J - K flange (design type J)

K - K flange (design type K)

P - flange

Q - special connection

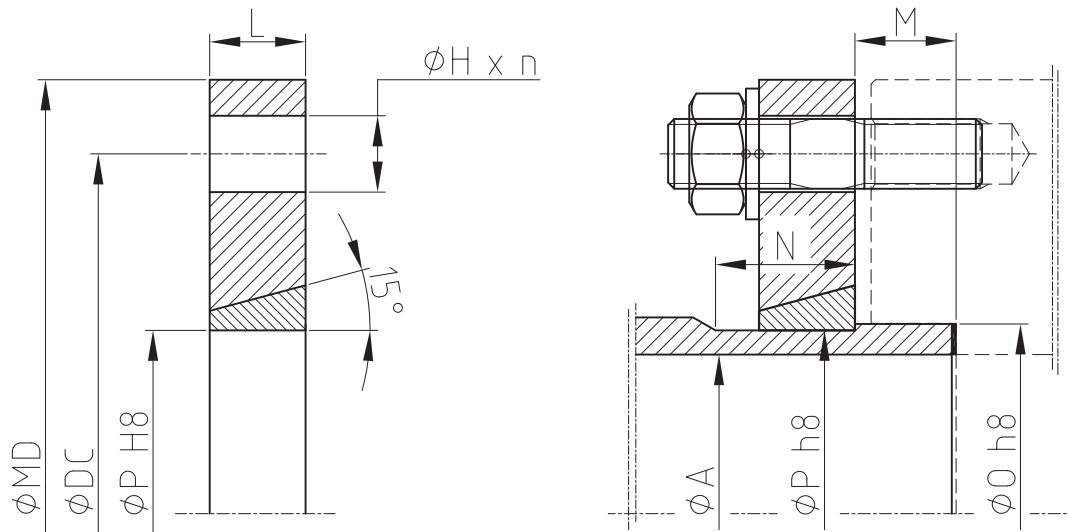
Series:

- Specifies rotary joints design, connecting elements and material
- Rotary joints series are specified further in design guide

The information and specifications presented in this catalogue are accurate, but are supplied for information purpose only. Nothing contained herein is to be construed as a warranty or guarantee. If the customer - user does not consult with company, then he assumes the ultimate responsibility for the proper selection, installation, operation and maintenance of "Vrška Press" products.

Because Vrška Press company is continually improving and upgrading its product design, the specifications, dimensions and information contained herein are subject to change without notice.

K Flange connection



ND	Size	ØO G7/h8	ØP H8/h8	ØA	N	M	ØDC	ØMD	L	ØH x n	Design Type
10	3/8"	18	17	10	11	6	40	55	10	Ø7 x 4	Design type I
15	1/2"	24	22	13	12	6	50	70	10	Ø7 x 4	Design type I
	1/2"	20.7	19.6	13	15	9.5	66.7	95.2	12.7	Ø9.5 x 4	Design type K
20	3/4"	30	28	20	13	8	55	75	12	Ø9 x 4	Design type I
	3/4"	26	24.2	20	17.5	11.1	76.2	115	15	Ø11 x 4	Design type K
25	1"	35	33	25	13	8	60	80	12	Ø9 x 4	Design type I
	1"	32.5	30.8	25	17.5	11.1	88.9	127	15	Ø14 x 4	Design type K
32	1 1/4"	45	43	31	13	8	75	100	12	Ø11 x 4	Design type I
	1 1/4"	45	43	31	16	15	90	115	15	Ø11 x 4	Design type J
	1 1/4"	41.3	39.6	31	19	12.7	88.9	127	16	Ø14 x 4	Design type K
40	1 1/2"	50	48	38	16	10	80	105	15	Ø11 x 4	Design type I
	1 1/2"	50	48	38	20	20	95	120	18	Ø11 x 4	Design type J
	1 1/2"	47.6	45	38	22	12.7	100	140	20	Ø14 x 4	Design type K
50	2"	65	63	48	16	10	100	130	15	Ø14 x 4	Design type I
	2"	65	63	48	22	25	115	145	20	Ø14 x 4	Design type J
	2"	59.1	56.6	48	21.1	15.9	120.7	165	20	Ø14 x 4	Design type K
65	2 1/2"	85	82	62	16	10	120	150	15	Ø14 x 4	Design type I
	2 1/2"	85	82	62	28	25	135	165	25	Ø14 x 4	Design type J
	2 1/2"	72.2	69	62	28	19	120.7	165	26	Ø14 x 4	Design type K
75	3"	87.3	84.1	73	24.8	22.2	171.5	199	22	Ø18 x 4	Design type K
83	3 1/2"	105	102	83	20	12	145	180	18	Ø18 x 4	Design type I
	3 1/2"	105	102	83	34	30	170	205	30	Ø18 x 4	Design type J
	3 1/2"	100	96.5	83	32	25.4	177.8	216	30	Ø18 x 6	Design type K
100	4"	114	110	98	22	12	160	195	20	Ø18 x 6	Design type I
	4"	114	110	98	34	30	185	220	30	Ø18 x 6	Design type J
	4"	112.7	109.1	98	35	25.4	190.5	229	32	Ø18 x 6	Design type K
125	5"	142	137	122	25	20	190	225	22	Ø18 x 6	Design type I
	5"	150	145	122	39	35	225	260	35	Ø18 x 8	Design type J
	5"	139.2	134.2	122	42	32	235	292	39	Ø22 x 8	Design type K
150	6"	170	165	146	28	25	220	255	25	Ø18 x 8	Design type I
	6"	180	175	146	44	40	260	300	40	Ø18 x 8	Design type J
	6"	168	163	146	44	32	279.5	330	41	Ø22 x 8	Design type K



Product description:

TYPE

Rotary joint type RBGY with mechanical seal, and Tapered Roller bearings is available in monoflow and duoflow version in size from ND65 to ND100.

High performance rotary joint design for transfer of water and steam in rubber and paper industries. Through years of experience, it has been modified, redesigned and brought to perfection. New sealing technology, robust bearings and sealing ring as well as advanced materials enable reliability and extended life time.

Connection to the machine by means of:

- BSP (ISO 228) right-hand or left-hand male thread - standard
- NPT (ANSI) right-hand or left-hand male thread - on customer request
- K flange, with 3 different options

For different sizes of radial and axial housing connections (inlet & outlet) as well as sizes of stationary and rotating syphon pipe, please contact Vrska Press company or your local representative.

Features:

- Monoflow & duoflow design
- Mechanical seal
- Self-supported rotary joint
- Long service life
- Easy and quick repair
- Two robust Tapered Roller bearings

Materials:

- Seal faces combination: Carbon / SiC (standard)
- Secondary seal: NBR, EPDM, Viton, Aflas
- Rotor: Steel, Cast Iron
- Housing: Cast Iron



RBGY

Operating data:

ND	Size	Medium					
		Water			Steam		
		Max. Temperature	Max. Pressure	Max. Speed	Max. Temperature	Max. Pressure	Max. Speed
ND 65	2 ½"	192°C	13 bar	850 rpm	180°C	10 bar	850 rpm
ND 75	3"	192°C	13 bar	730 rpm	180°C	10 bar	730 rpm
ND 83	3 ½"	192°C	13 bar	660 rpm	180°C	10 bar	660 rpm
ND 100	4"	192°C	13 bar	550 rpm	180°C	10 bar	550 rpm

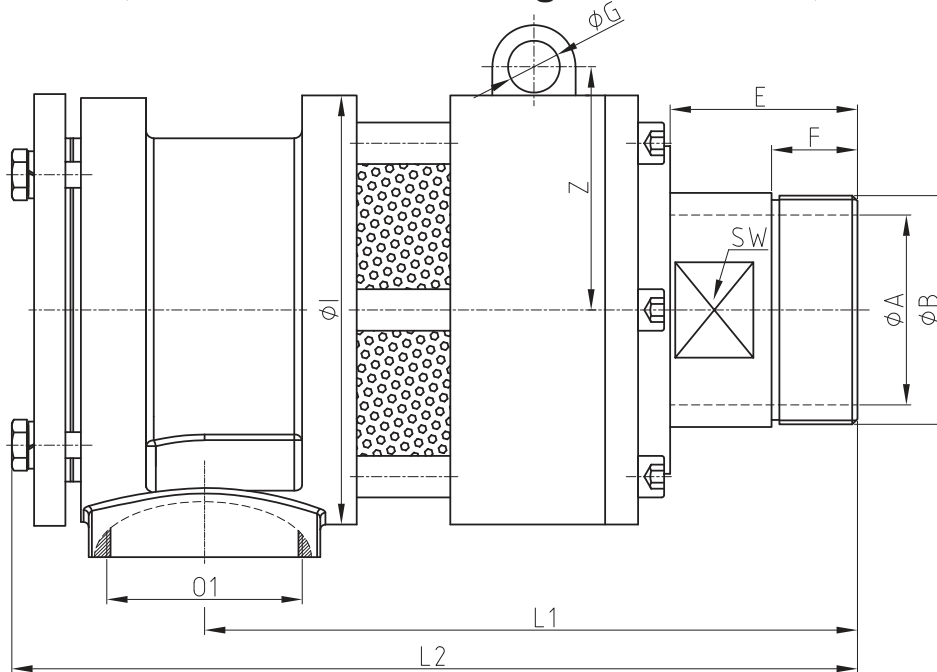
Avoid combination of maximum values. Medium plays important role to determine limiting factors, therefore we kindly ask our customers to contact our company before ordering. Higher values on request.

How do I choose the best Rotary Joint for my process?

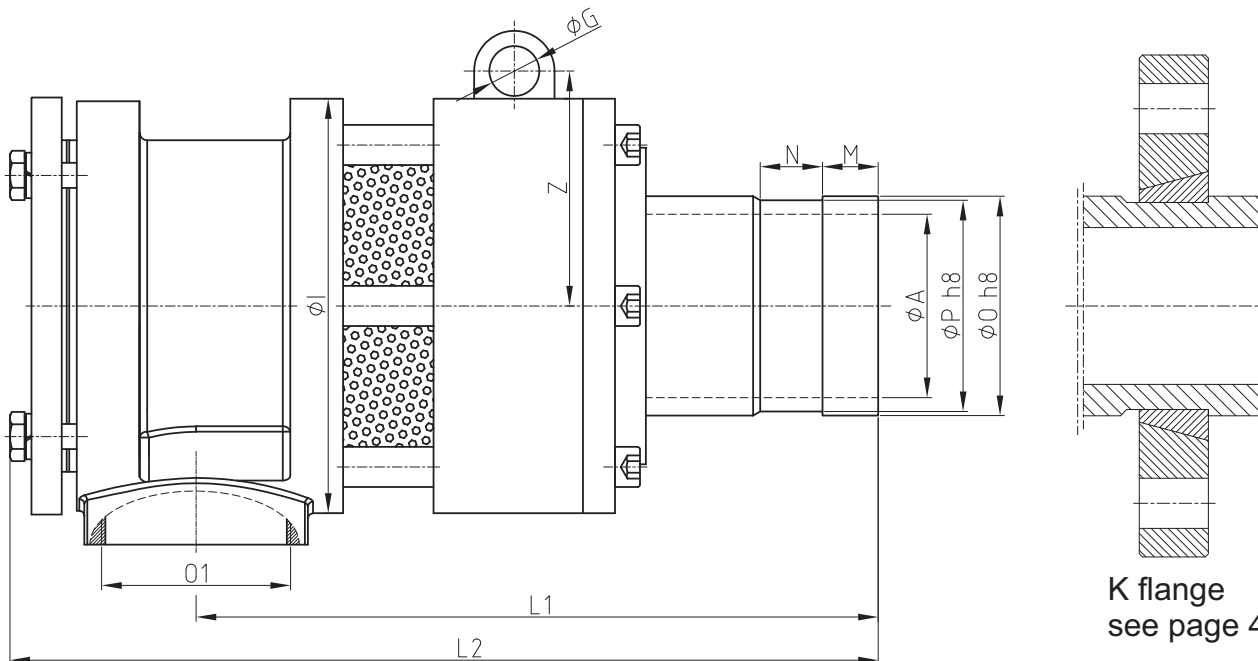
Tell us about Your process. We need to know the following:

- Flow Passage: Monoflow or Duoflow (if Duoflow: stationary or rotating syphon pipe)
- Working Medium
- Temperature (°C)
- Pressure (bar)
- Speed (rpm)
- Shaft Connection (thread size & type or flange size)
- Flow rate (L/min)

Monoflow, with BSP and K flange connection, ND 65 - 75



ND	Size	B Shaft Connection	O1	ØA	E	F	ØI	L1	L2	SW	Z	ØG	Monoflow with BSP (ISO 228) thread connection	
													Ordering No.	
65	2 1/2"	G 2 1/2" RH	G 2"	63	72	37	165	250	323	90	93.5	20	065 RBGY S 10RH 13003	
	2 1/2"	G 2 1/2" LH	G 2"	63	72	37	165	250	323	90	93.5	20	065 RBGY S 10LH 13003	
75	3"	G 3" RH	G 2 1/2"	73	72	37	165	250	323	90	93.5	20	075 RBGY S 10RH 13003	
	3"	G 3" LH	G 2 1/2"	73	72	37	165	250	323	90	93.5	20	075 RBGY S 10LH 13003	

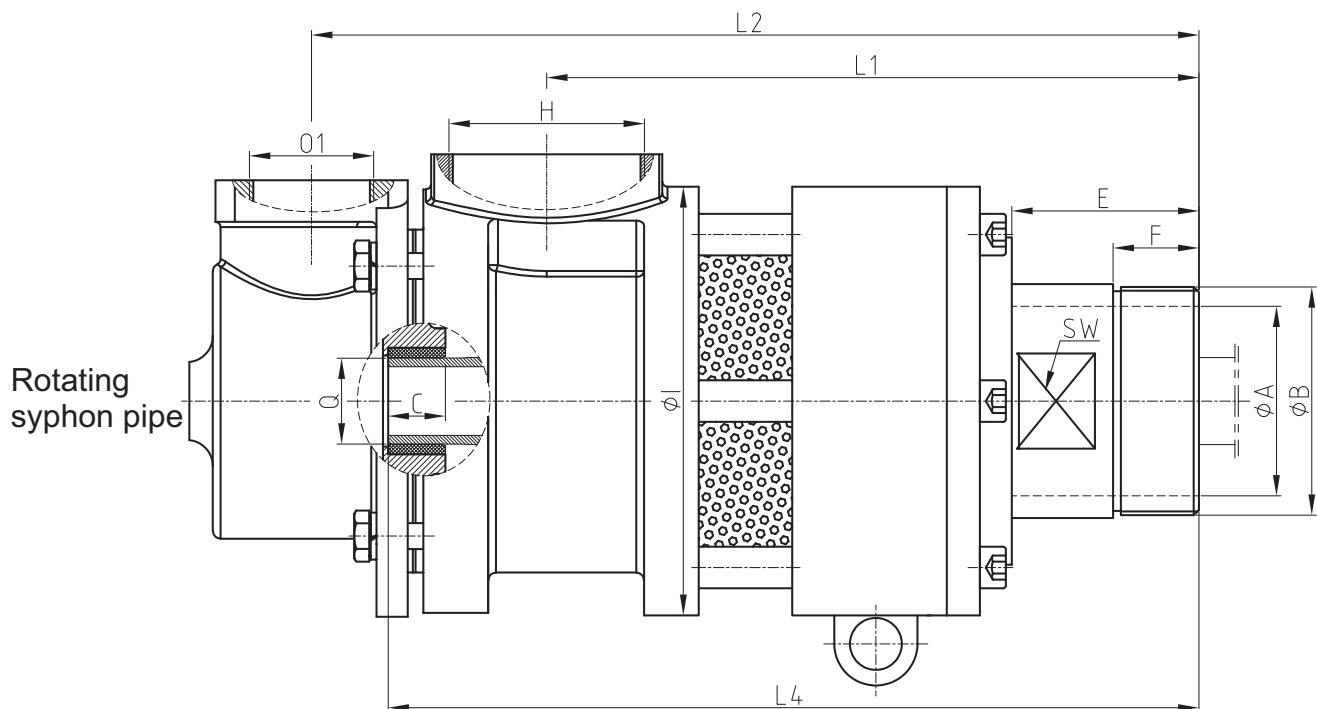
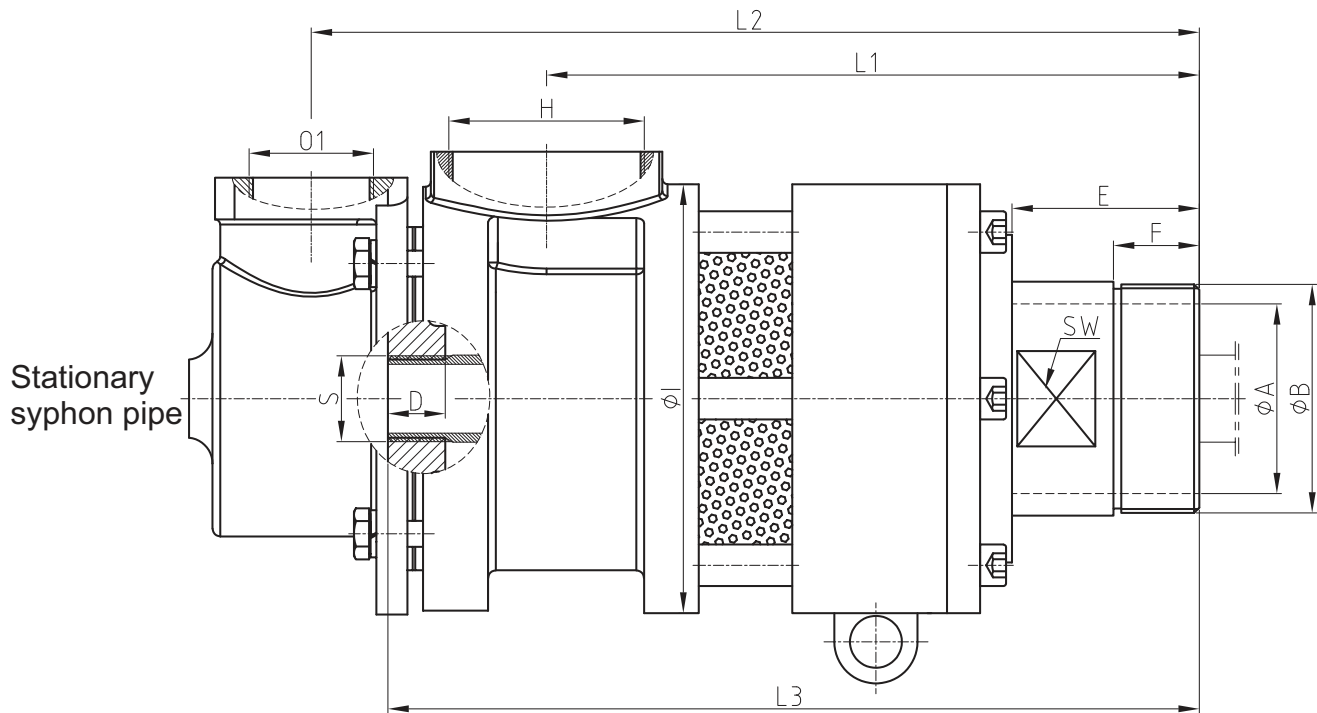


ND	Size	ØO h8	ØP h8	O1	ØA	N	M	ØI	L1	L2	Z	ØG	Monoflow with K flange connection	
													Ordering No.	
65	2 1/2"	85	82	G 2"	63	16	10	165	250	326	93.5	20	065 RBGY S 10I 13003	
	2 1/2"	85	82	G 2"	63	28	25	165	250	326	93.5	20	065 RBGY S 10J 13003	
	2 1/2"	72.2	69	G 2 1/2"	63	28	19	165	250	326	93.5	20	065 RBGY S 10K 13003	
75	3"	87.3	84.1	G 2 1/2"	73	24.8	22.2	165	250	335	93.5	20	075 RBGY S 10K 13003	

Type RBGY Series 13003

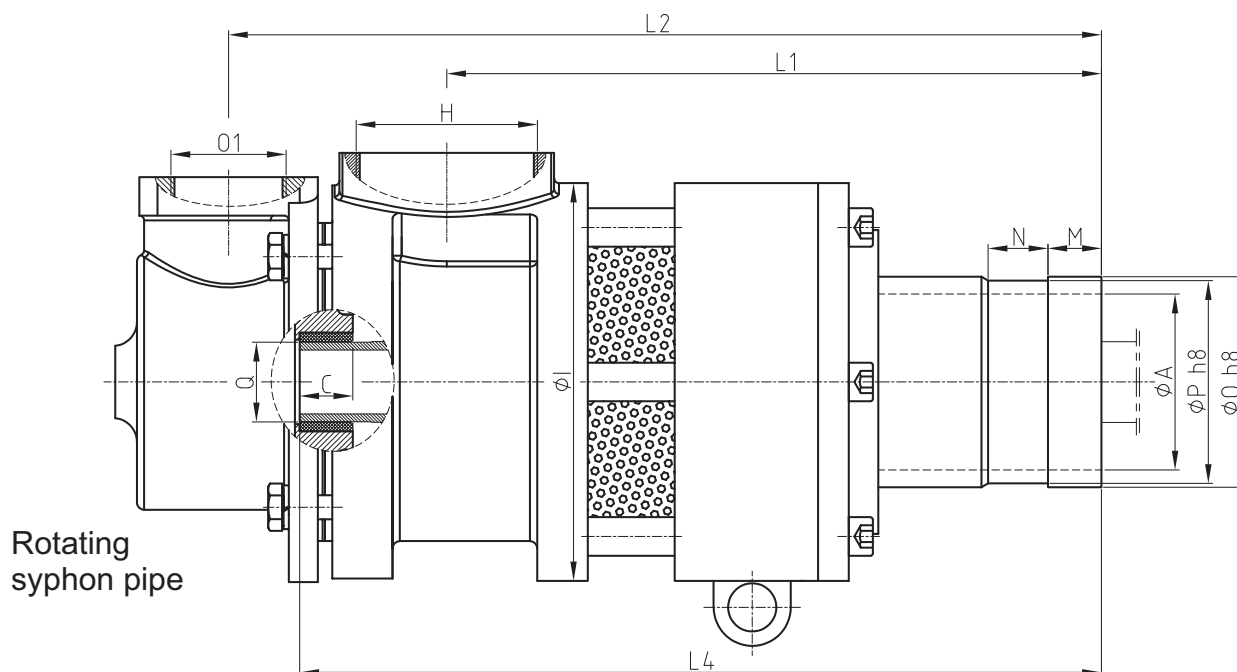
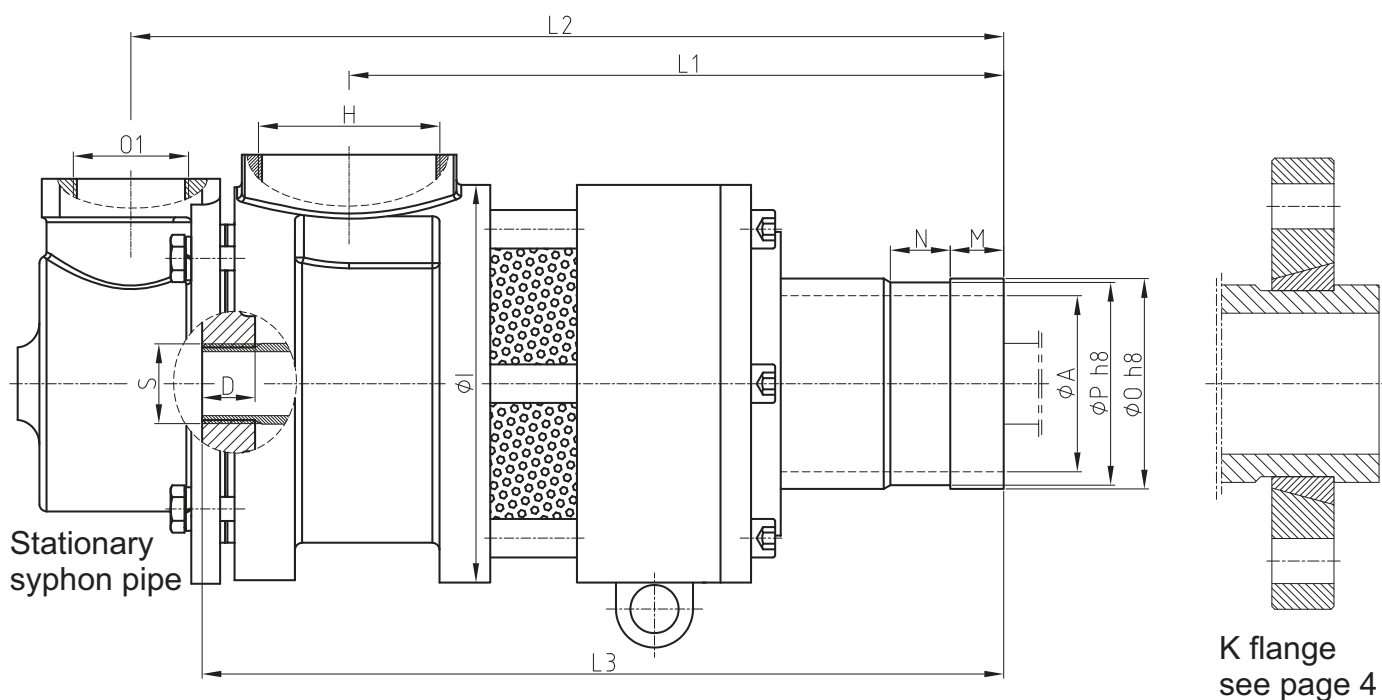


Duoflow, with BSP thread connection, ND 65 - 75



ND	Size	B	H	O1	ØA	E	F	ØI	L1	L2	SW	Stationary syphon pipe				Rotating syphon pipe			
												Ordering No.	S	D	L3	Ordering No.	ØQ	C	L4
65	2 1/2"	G 2 1/2" RH	G 2"	G 1 1/4"	63	72	37	165	250	340	90	065 RBGY S 20RH 13003	1 1/4"	22	311	065 RBGY S 40RH 13003	42	30	311
	2 1/2"	G 2 1/2" LH	G 2"	G 1 1/4"	63	72	37	165	250	340	90	065 RBGY S 20LH 13003	1 1/4"	22	311	065 RBGY S 40LH 13003	42	30	311
75	3"	G 3" RH	G 2 1/2"	G 1 1/2"	73	72	37	165	250	340	90	075 RBGY S 20RH 13003	1 1/2"	22	311	075 RBGY S 40RH 13003	48	35	311
	3"	G 3" LH	G 2 1/2"	G 1 1/2"	73	72	37	165	250	340	90	075 RBGY S 20LH 1303	1 1/2"	22	311	075 RBGY S 40LH 13003	48	35	311

Duoflow, with K flange connection, ND 65 - 75

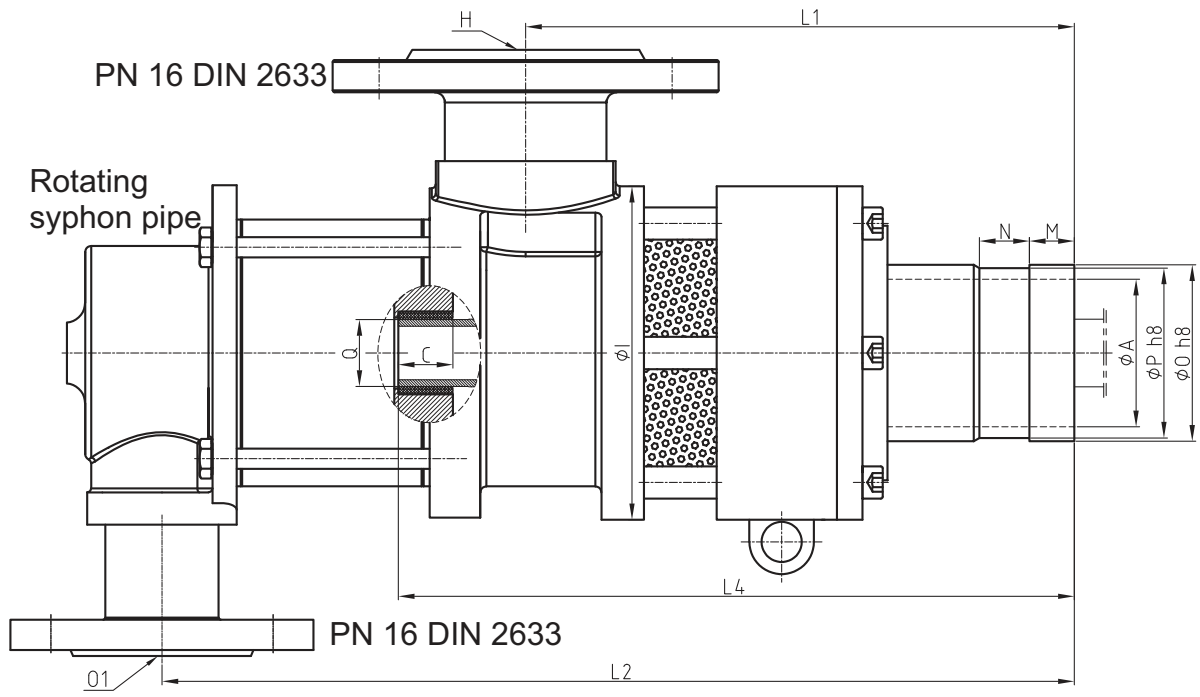
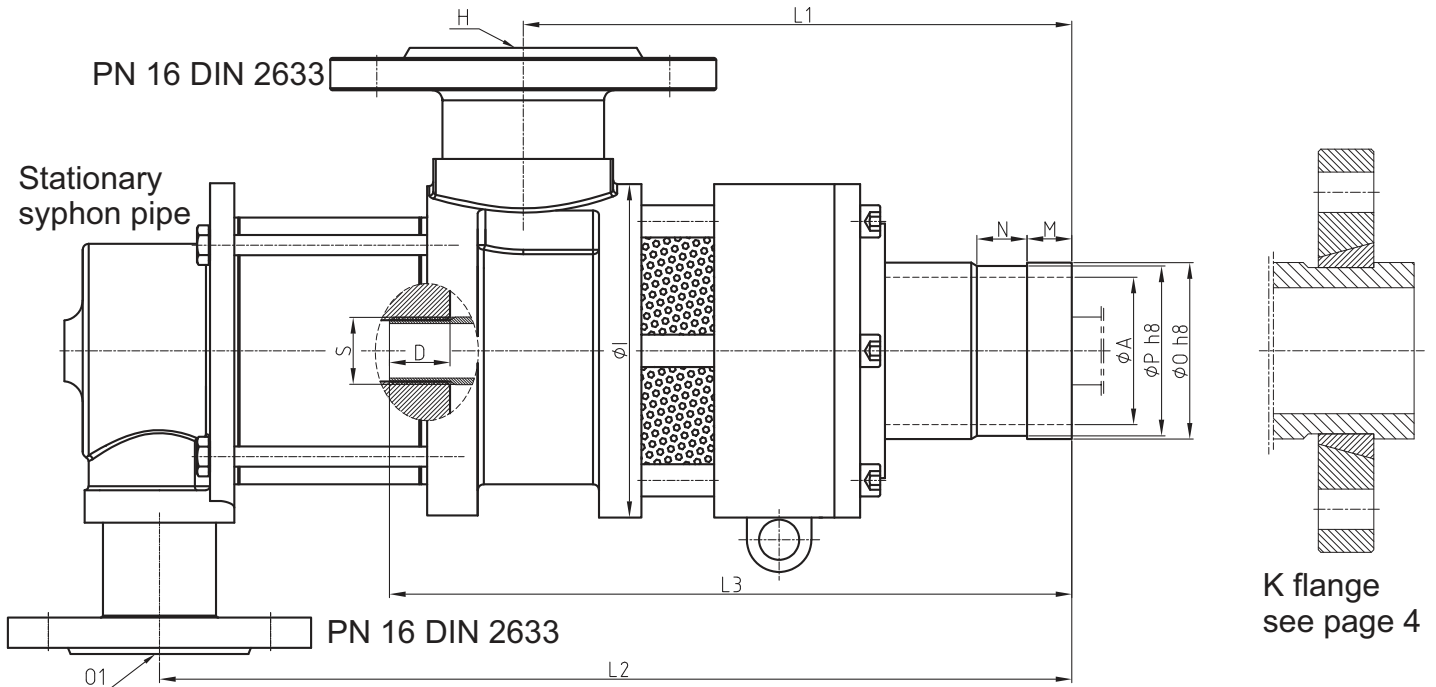


ND	Size	ØO h8	ØP h8	H	O1	ØA	N	M	ØI	L1	L2	Stationary syphon pipe				Rotating syphon pipe			
												Ordering No.	S	D	L3	Ordering No.	ØQ	C	L4
65	2 1/2"	85	82	G 2"	G 1 1/4"	63	16	10	165	253	343	065 RBGY S 20I 13003	1 1/4"	22	284	065 RBGY S 40I 13003	42	30	284
	2 1/2"	85	82	G 2"	G 1 1/4"	63	28	25	165	253	343	065 RBGY S 20J 13003	1 1/4"	22	284	065 RBGY S 40J 13003	42	30	284
	2 1/2"	72.2	69	G 2"	G 1 1/4"	63	28	19	165	253	343	065 RBGY S 20K 13003	1 1/4"	22	284	065 RBGY S 40K 13003	42	30	284
75	3"	87.3	84.1	G 2 1/2"	G 1 1/2"	73	24.8	22.2	165	260	351	075 RBGY S 20K 13003	1 1/2"	22	321	075 RBGY S 40K 13003	48	35	321

Type RBGY Series 13063



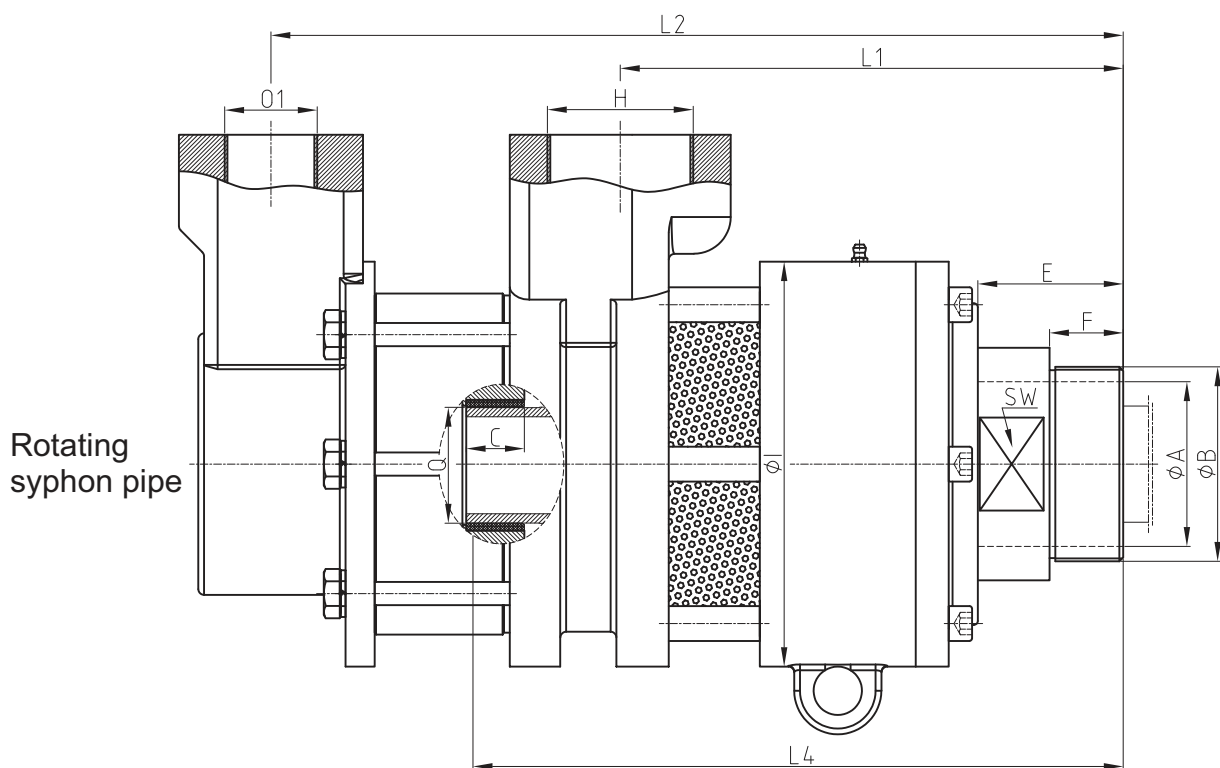
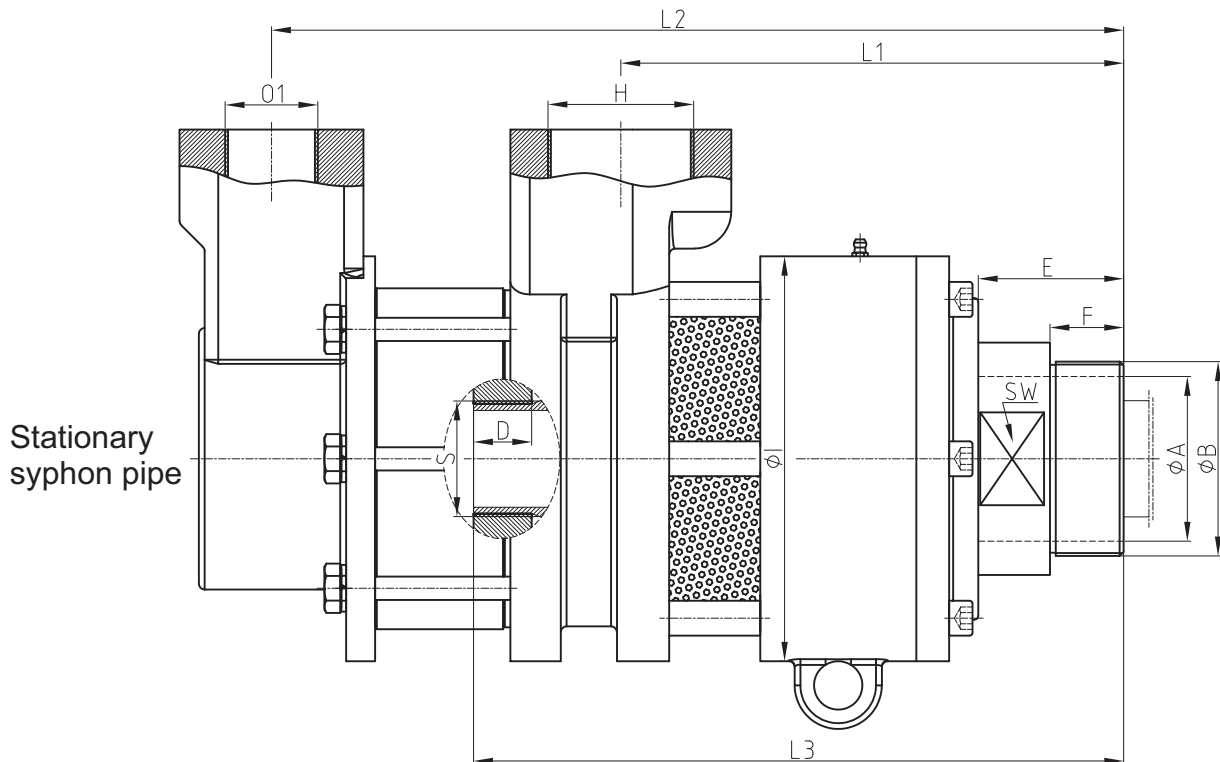
Duoflow, with K flange connection, ND 65 - 75



ND	Size	ØO h8	ØP h8	H	O1	ØA	N	M	Ø1	L1	L2	Stationary syphon pipe				Rotating syphon pipe									
												Ordering No.				S	D	L3	Ordering No.				ØQ	C	L4
65	2 1/2"	85	82	DN 50	DN 40	63	16	10	165	253	343	065 RBGY S 20I 13063				1 1/4"	22	284	065 RBGY S 40I 13063				42	30	284
	2 1/2"	85	82	DN 50	DN 40	63	28	25	165	253	343	065 RBGY S 20J 13063				1 1/4"	22	284	065 RBGY S 40J 13063				42	30	284
	2 1/2"	72.2	69	DN 50	DN 40	63	28	19	165	253	343	065 RBGY S 20K 13063				1 1/4"	22	284	065 RBGY S 40K 13063				42	30	284
75	3"	87.3	84.1	DN 65	DN 40	73	24.8	22.2	165	260	351	075 RBGY S 20K 13063				1 1/2"	22	321	075 RBGY S 40K 13063				48	35	321

Type RBGY Series 13003

Duoflow, with BSP thread connection, ND 83 - 100

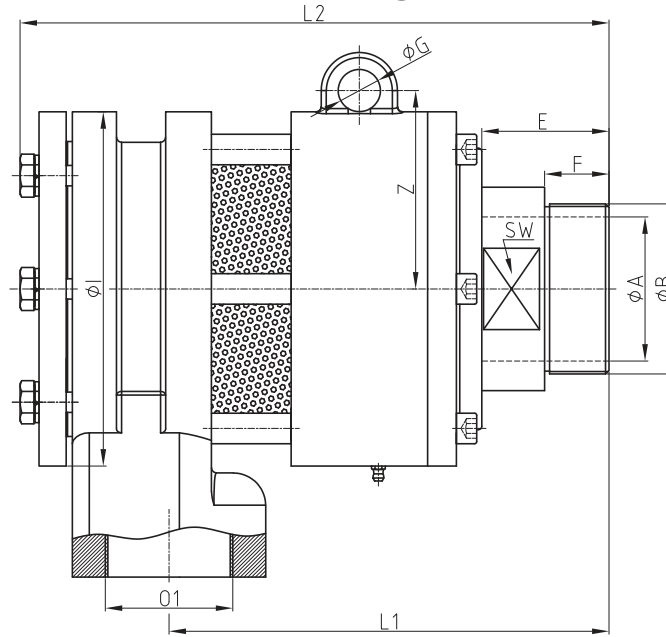


ND	Size	B	H	O1	ØA	E	F	ØI	L1	L2	SW	Stationary syphon pipe			Rotating syphon pipe				
												Ordering No.	S	D	L3	Ordering No.	ØQ	C	L4
83	3 1/2"	G 3 1/2" RH	G 2 1/2"	G 2"	85	75	35	209	260	440	110	083 RBGY S 20RH 13003	2"	30	335	083 RBGY S 40RH 13003	60	35	335
	3 1/2"	G 3 1/2" LH	G 2 1/2"	G 2"	85	75	35	209	260	440	110	083 RBGY S 20LH 13003	2"	30	335	083 RBGY S 40LH 13003	60	35	335
100	4"	G 4" RH	G 3"	G 2 1/2"	97	100	60	209	285	446	110	100 RBGY S 20RH 13003	2"	30	335	100 RBGY S 40RH 13003	60	35	335
	4"	G 4" LH	G 3"	G 2 1/2"	97	100	60	209	285	446	110	100 RBGY S 20LH 13003	2"	30	335	100 RBGY S 40LH 13003	60	35	335

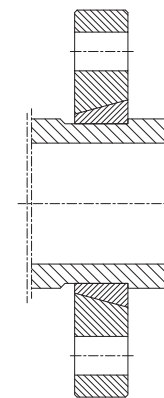
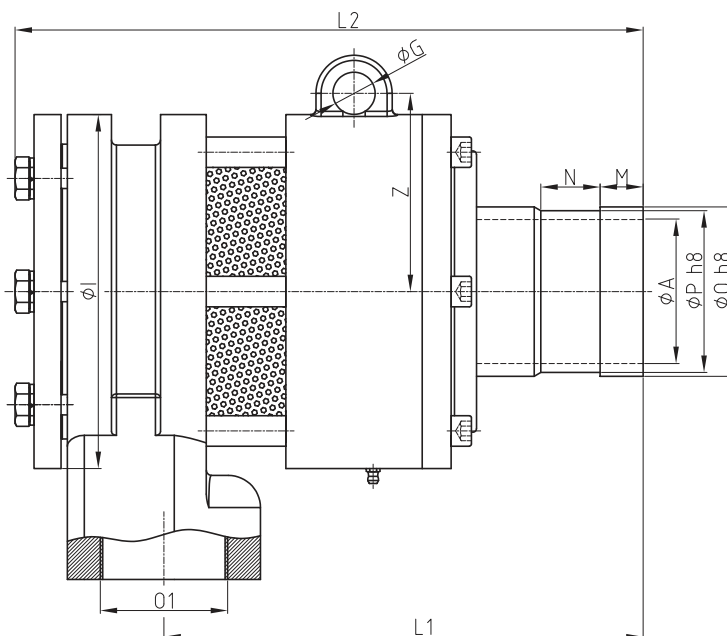
Type RBGY Series 13003



Monoflow, with BSP and K flange connection, ND 83 - 100



ND	Size	B Shaft Connection	O1	ØA	E	F	ØI	L1	L2	SW	Z	ØG	Monoflow with BSP (ISO 228) thread connection	
													Ordering No.	
83	3 1/2"	G 3 1/2" RH	G 2 1/2"	85	75	35	209	260	346	110	117	25	083 RBGY S 10RH 13003	
	3 1/2"	G 3 1/2" LH	G 2 1/2"	85	75	35	209	260	346	110	117	25	083 RBGY S 10LH 13003	
100	4"	G 4" RH	G 3"	97	100	60	209	285	370	110	117	25	100 RBGY S 10RH 13003	
	4"	G 4" LH	G 3"	97	100	60	209	285	370	110	117	25	100 RBGY S 10LH 13003	

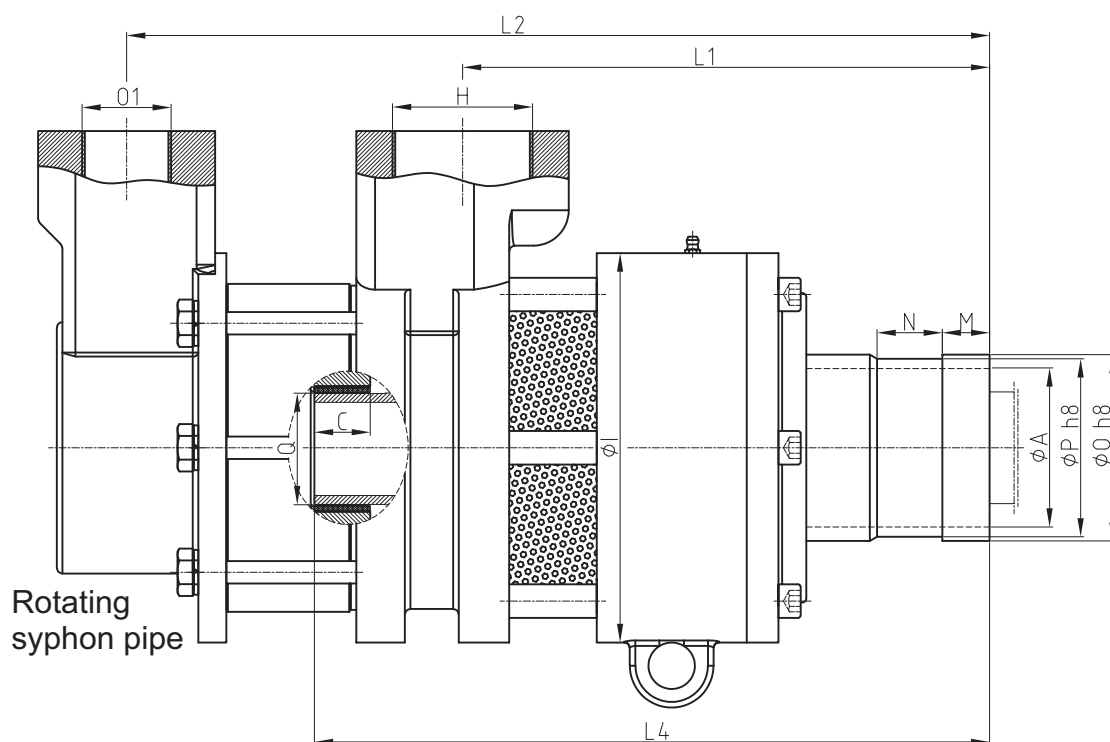
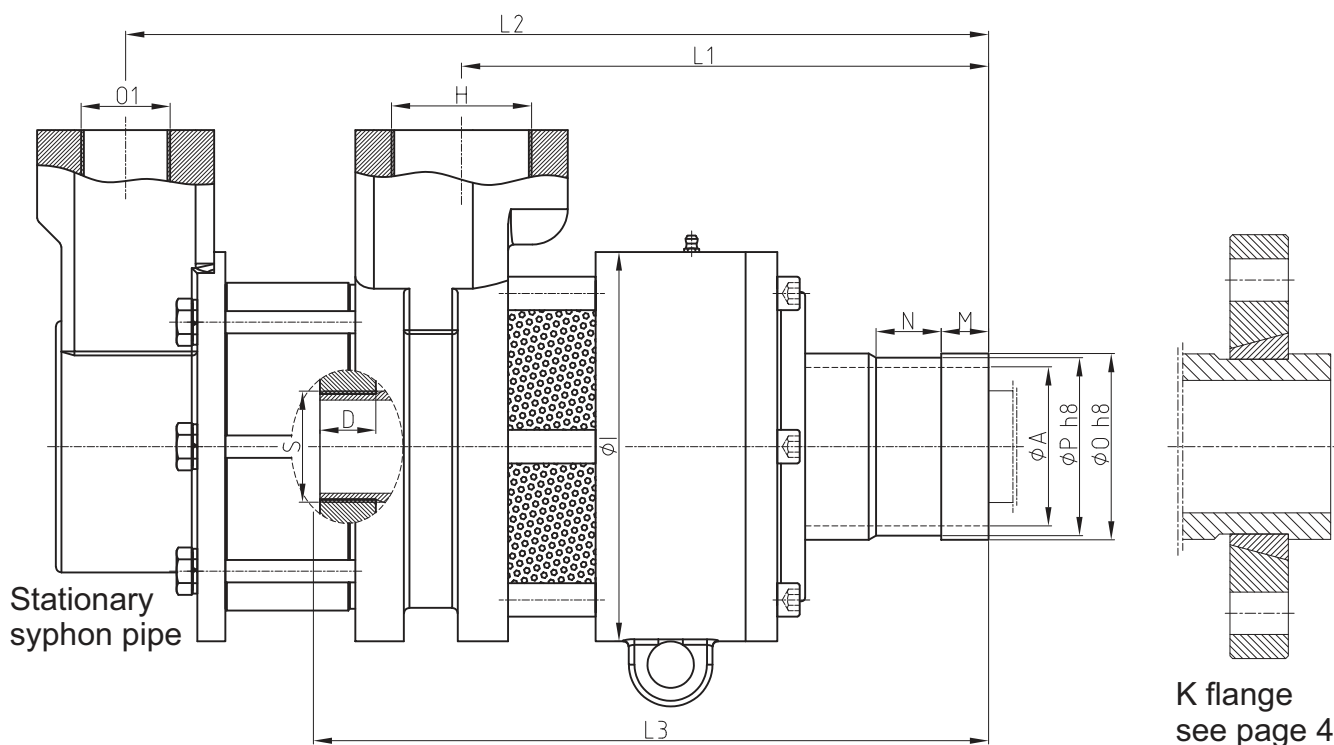


K flange
see page 4

ND	Size	ØO h8	ØP h8	O1	ØA	N	M	ØI	L1	L2	Z	ØG	Monoflow with K flange connection	
													Ordering No.	
83	3 1/2"	105	102	G 2 1/2"	85	20	12	209	278	365	117	25	083 RBGY S 10I 13003	
	3 1/2"	105	102	G 2 1/2"	85	34	30	209	278	365	117	25	083 RBGY S 10J 13003	
	3 1/2"	100	96.5	G 2 1/2"	85	32	25.4	209	278	365	117	25	083 RBGY S 10K 13003	
100	4"	114	110	G 3"	97	22	12	209	291	377	117	25	100 RBGY S 10I 13003	
	4"	114	110	G 3"	97	34	30	209	291	377	117	25	100 RBGY S 10J 13003	
	4"	112.7	109.1	G 3"	97	35	25.4	209	291	377	117	25	100 RBGY S 10K 13003	

Type RBGY Series 13003

Duoflow, with K flange connection, ND 83 - 100

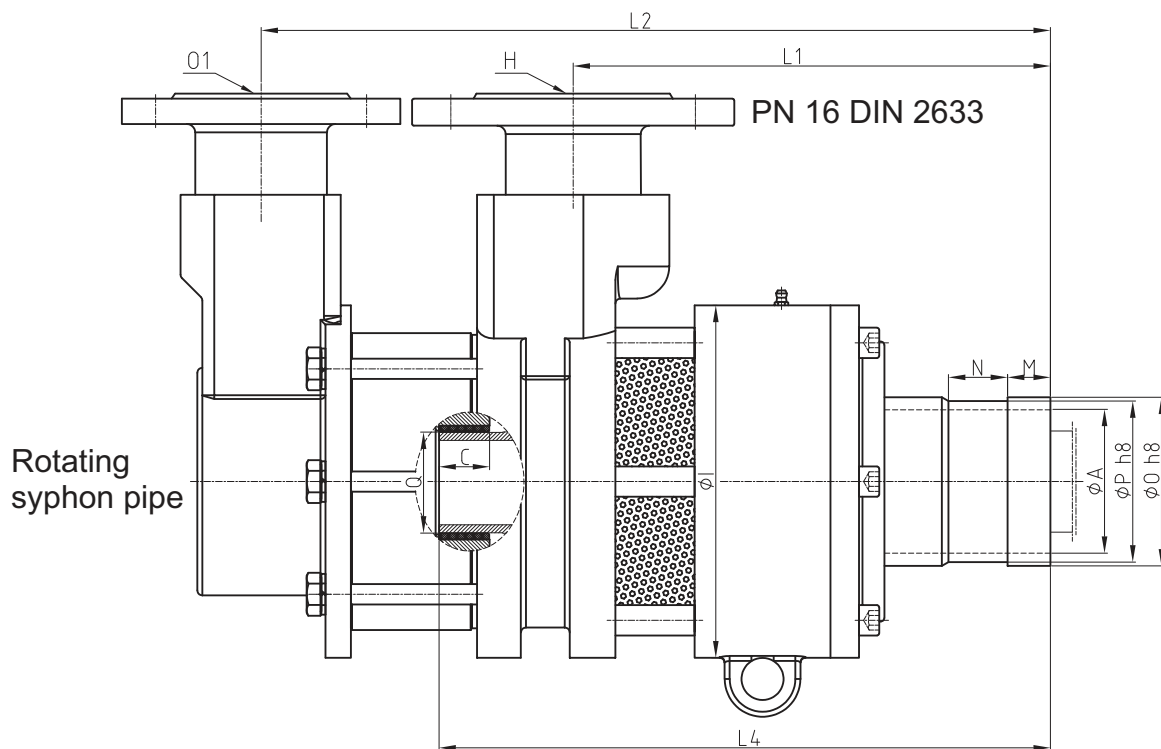
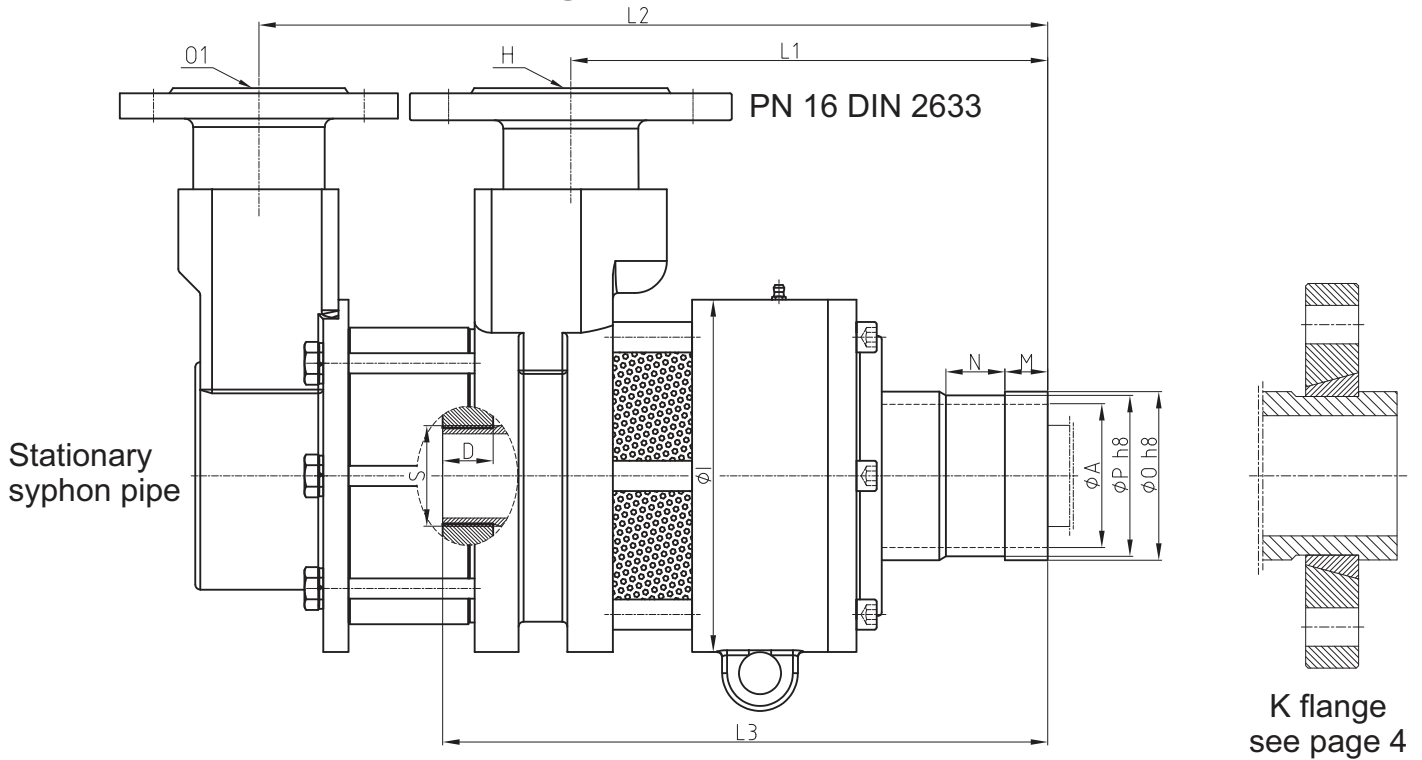


ND	Size	ØO h8	ØP h8	H	O1	ØA	N	M	ØI	L1	L2	Stationary syphon pipe			Rotating syphon pipe				
												Ordering No.	S	D	L3	Ordering No.	ØQ	C	L4
83	3 1/2"	105	102	G 2 1/2"	G 2"	85	20	12	209	278	413	083 RBGY S 20I 13003	2"	30	351	083 RBGY S 40I 13003	60	35	351
	3 1/2"	105	102	G 2 1/2"	G 2"	85	34	30	209	278	413	083 RBGY S 20J 13003	2"	30	351	083 RBGY S 40J 13003	60	35	351
	3 1/2"	100	96.5	G 2 1/2"	G 2"	85	32	25.4	209	278	413	083 RBGY S 20K 13003	2"	30	351	083 RBGY S 40K 13003	60	35	351
100	4"	114	110	G 3"	G 2 1/2"	97	22	12	209	292	453	100 RBGY S 20I 13003	2"	30	388	100 RBGY S 40I 13003	60	35	388
	4"	114	110	G 3"	G 2 1/2"	97	34	30	209	292	453	100 RBGY S 20J 13003	2"	30	388	100 RBGY S 40J 13003	60	35	388
	4"	112.7	109.1	G 3"	G 2 1/2"	97	35	25.4	209	292	453	100 RBGY S 20K 13003	2"	30	388	100 RBGY S 40K 13003	60	35	388

Type RBGY Series 13063



Duoflow, with K flange connection, ND 83 - 100



ND	Size	ØO h8	ØP h8	H	O1	ØA	N	M	ØI	L1	L2	Stationary syphon pipe				Rotating syphon pipe			
												Ordering No.	S	D	L3	Ordering No.	ØQ	C	L4
83	3 1/2"	105	102	DN 65	DN 50	85	20	12	209	278	413	083 RBGY S 20I 13063	2"	30	351	083 RBGY S 40I 13063	60	35	351
	3 1/2"	105	102	DN 65	DN 50	85	34	30	209	278	413	083 RBGY S 20J 13063	2"	30	351	083 RBGY S 40J 13063	60	35	351
	3 1/2"	100	96.5	DN 65	DN 50	85	32	25.4	209	278	413	083 RBGY S 20K 13063	2"	30	351	083 RBGY S 40K 13063	60	35	351
100	4"	114	110	DN 80	DN 65	97	22	12	209	292	453	100 RBGY S 20I 13063	2"	30	388	100 RBGY S 40I 13063	60	35	388
	4"	114	110	DN 80	DN 65	97	34	30	209	292	453	100 RBGY S 20J 13063	2"	30	388	100 RBGY S 40J 13063	60	35	388
	4"	112.7	109.1	DN 80	DN 65	97	35	25.4	209	292	453	100 RBGY S 20K 13063	2"	30	388	100 RBGY S 40K 13063	60	35	388

