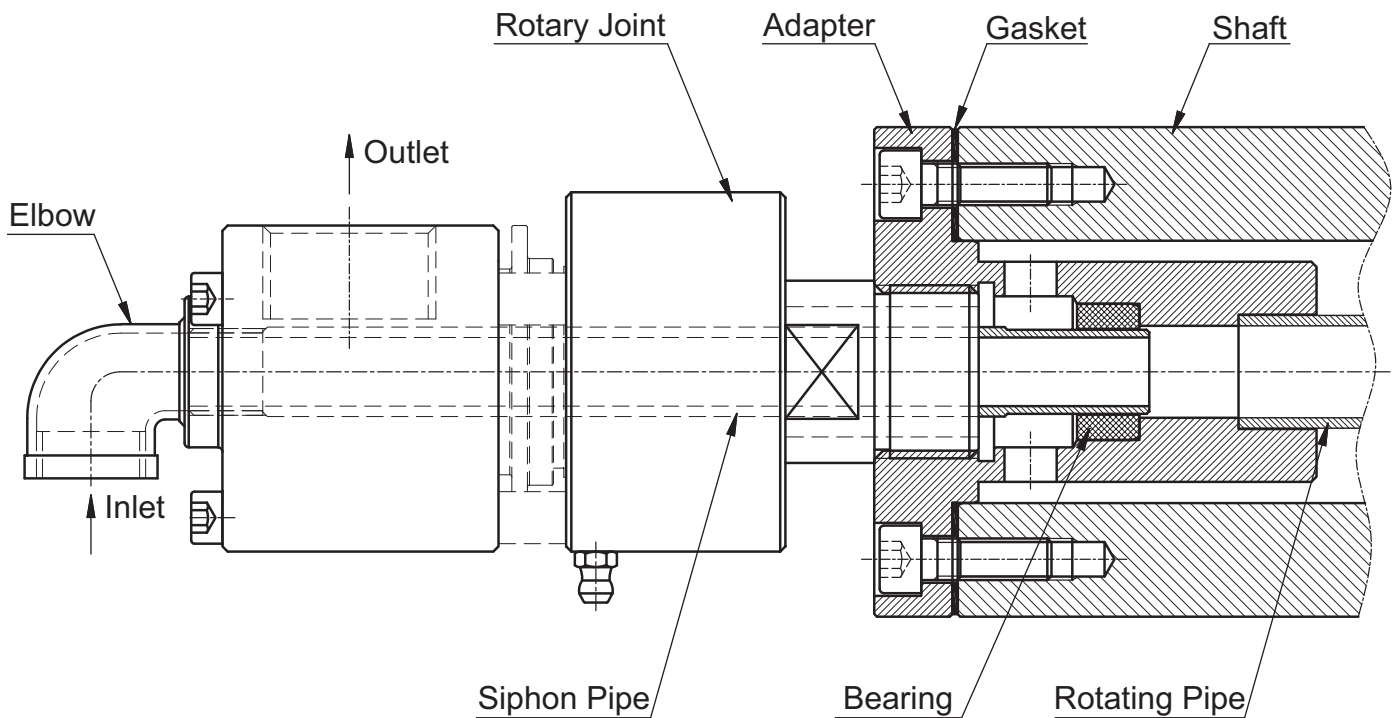


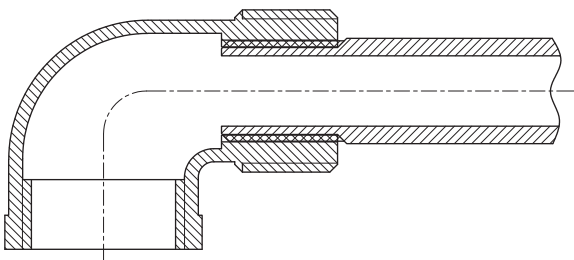
# Dual Flow Siphon Pipe Installation



Vrska Press water service rotary joints are designed for dual flow applications where a single fluid circulate through and around the siphon pipe. Dual flow elbow pipes are available in two options. A typical adapter shown below should be used to avoid stress and vibrations to the rotary joint when high speeds or long pipes are required. The guidelines should be carefully considered.

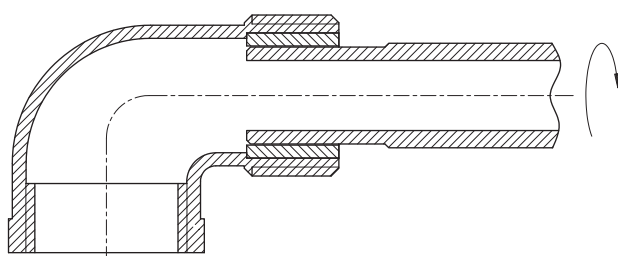


## Stationary (threaded) Pipe



Stationary siphon pipe enable maximum flow rates available for specific rotary joint size. Thread should be sealed with PTFE tape or secure with Loctite 243. Long pipes and rotational speed above 1500 rpm should be avoided.

## Rotating Pipe



Dual flow elbow with bearing, support the pipe which is fastened internally and rotate together with the roll. The rotating pipe must be straight and concentric to the center of rotation to avoid excessive force to the rotary joint. Rotational speed above 1000 rpm should be avoided.

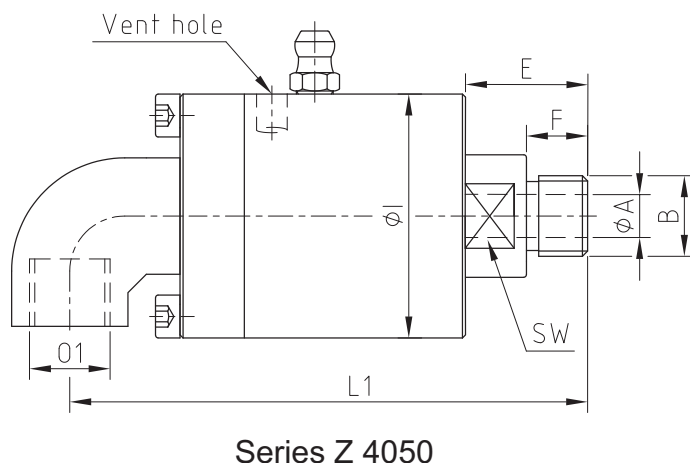
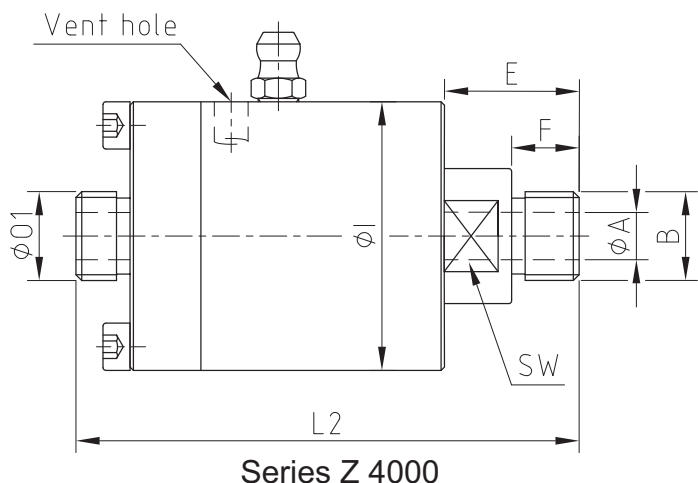


# Type RBMX

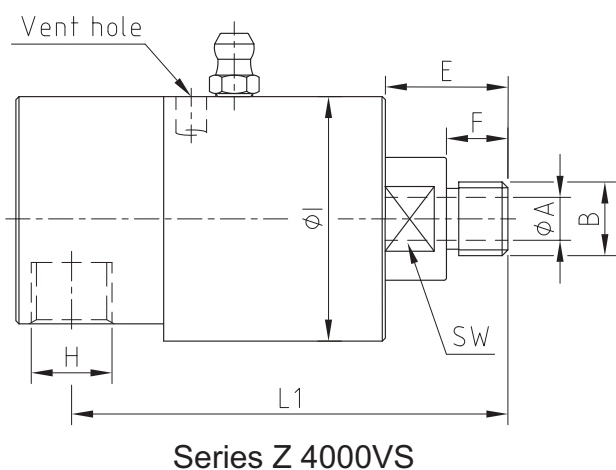
## Series: Z4000, Z4050, Z4000VS



Mono flow, closed housing, with BSP thread connection, ND 07

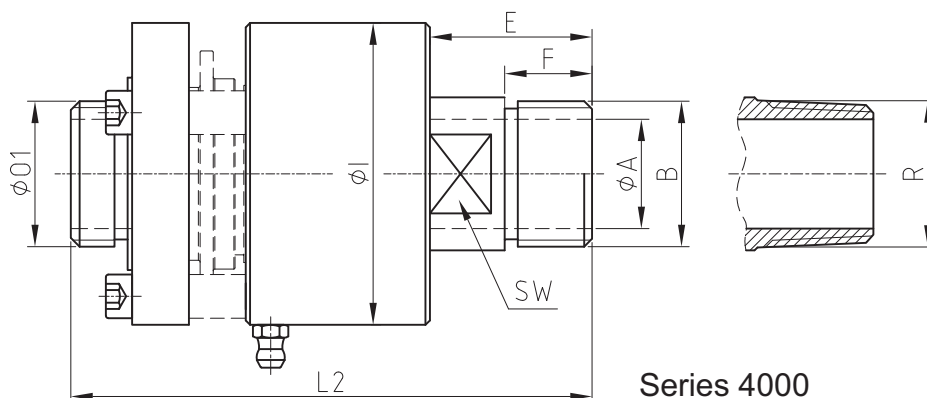


ND	B Shaft Connection	O1	ØA	E	F	Ø1	L1	L2	SW	Series Z 4000 without Elbow Pipe	Series Z 4050 with Elbow Pipe
										Ordering No.	Ordering No.
07	G 1/4" RH	G 1/4"	7	20	10	40	85	75	17	07 RBMX S 10RH Z 4000	07 RBMX S 10RH Z 4050
	G 1/4" LH	G 1/4"	7	20	10	40	85	75	17	07 RBMX S 10LH Z 4000	07 RBMX S 10LH Z 4050

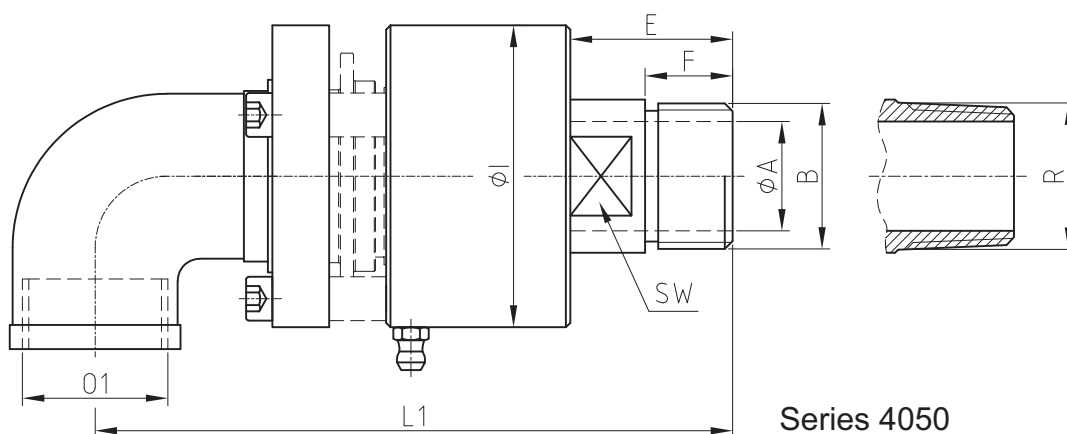


ND	B Shaft Connection	H	ØA	E	F	Ø1	L1	SW	Series Z 4000VS without Elbow Pipe
									Ordering No.
07	M12 x 1.75 RH	G 1/4"	7	20	10	40	71	17	07 RBMX S 10RH Z 4000VS
	M12 x 1.75 LH	G 1/4"	7	20	10	40	71	17	07 RBMX S 10LH Z 4000VS

Mono flow, with BSP or NPT thread connection, ND 10 - 40



Series 4000



Series 4050

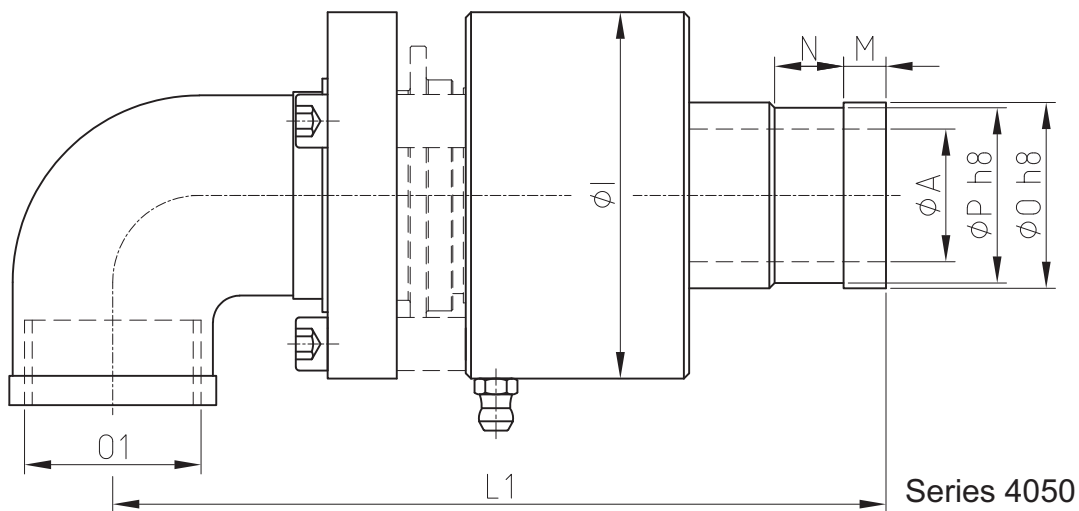
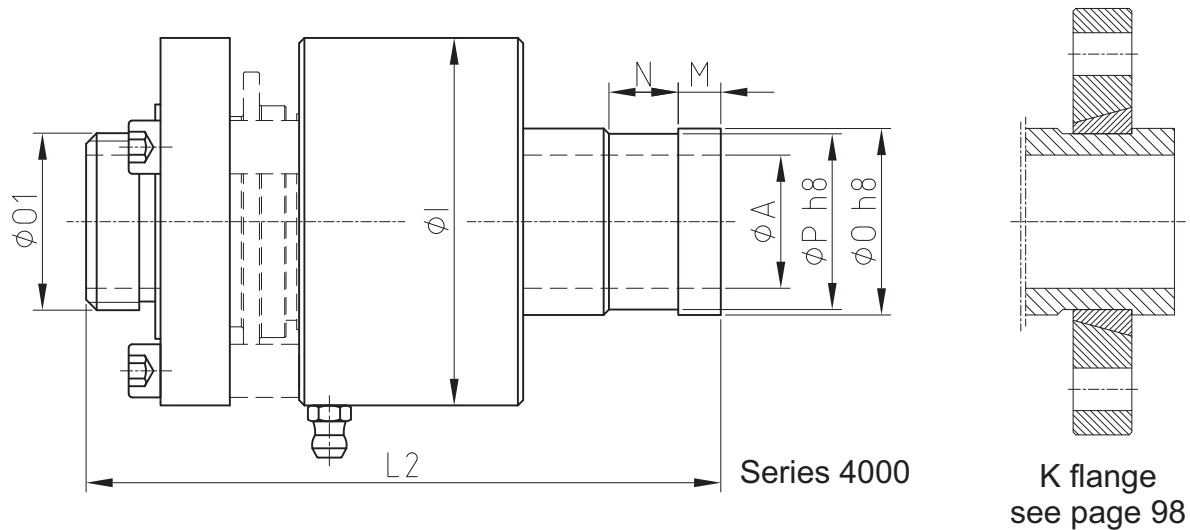
ND	B / R Shaft Connection	O1	ØA	E	F	ØI	L1	L2	SW	Series 4000 without Elbow Pipe	Series 4050 with Elbow Pipe
										Ordering No.	Ordering No.
10	G 3/8" RH	G 3/8"	10	27	14	54	113	100	17	010 RBMX S 10RH 4000	010 RBMX S 10RH 4050
	G 3/8" LH	G 3/8"	10	27	14	54	113	100	17	010 RBMX S 10LH 4000	010 RBMX S 10LH 4050
	3/8" NPT RH	G 3/8"	10	27	14	54	113	100	17	010 RBMX S 10G 4000	010 RBMX S 10G 4050
	3/8" NPT LH	G 3/8"	10	27	14	54	113	100	17	010 RBMX S 10H 4000	010 RBMX S 10H 4050
15	G 1/2" RH	G 1/2"	13	27	14	54	116	100	21	015 RBMX S 10RH 4000	015 RBMX S 10RH 4050
	G 1/2" LH	G 1/2"	13	27	14	54	116	100	21	015 RBMX S 10LH 4000	015 RBMX S 10LH 4050
	1/2" NPT RH	G 1/2"	13	27	14	54	116	100	21	015 RBMX S 10G 4000	015 RBMX S 10G 4050
	1/2" NPT LH	G 1/2"	13	27	14	54	116	100	21	015 RBMX S 10H 4000	015 RBMX S 10H 4050
20	G 3/4" RH	G 3/4"	20	35	16	64	128	111	25	020 RBMX S 10RH 4000	020 RBMX S 10RH 4050
	G 3/4" LH	G 3/4"	20	35	16	64	128	111	25	020 RBMX S 10LH 4000	020 RBMX S 10LH 4050
	3/4" NPT RH	G 3/4"	20	35	16	64	128	111	25	020 RBMX S 10G 4000	020 RBMX S 10G 4050
	3/4" NPT LH	G 3/4"	20	35	16	64	128	111	25	020 RBMX S 10H 4000	020 RBMX S 10H 4050
25	G 1" RH	G 1"	25	37	20	69	146	119	30	025 RBMX S 10RH 4000	025 RBMX S 10RH 4050
	G 1" LH	G 1"	25	37	20	69	146	119	30	025 RBMX S 10LH 4000	025 RBMX S 10LH 4050
	1" NPT RH	G 1"	25	37	20	69	146	119	30	025 RBMX S 10G 4000	025 RBMX S 10G 4050
	1" NPT LH	G 1"	25	37	20	69	146	119	30	025 RBMX S 10H 4000	025 RBMX S 10H 4050
32	G 1 1/4" RH	G 1 1/4"	32	37	20	84	157	130	41	032 RBMX S 10RH 4000	032 RBMX S 10RH 4050
	G 1 1/4" LH	G 1 1/4"	32	37	20	84	157	130	41	032 RBMX S 10LH 4000	032 RBMX S 10LH 4050
	1 1/4" NPT RH	G 1 1/4"	32	37	20	84	157	130	41	032 RBMX S 10G 4000	032 RBMX S 10G 4050
	1 1/4" NPT LH	G 1 1/4"	32	37	20	84	157	130	41	032 RBMX S 10H 4000	032 RBMX S 10H 4050
40	G 1 1/2" RH	G 1 1/2"	40	43	22	87.5	163	134	46	040 RBMX S 10RH 4000	040 RBMX S 10RH 4050
	G 1 1/2" LH	G 1 1/2"	40	43	22	87.5	163	134	46	040 RBMX S 10LH 4000	040 RBMX S 10LH 4050
	1 1/2" NPT RH	G 1 1/2"	40	43	22	87.5	163	134	46	040 RBMX S 10G 4000	040 RBMX S 10G 4050
	1 1/2" NPT LH	G 1 1/2"	40	43	22	87.5	163	134	46	040 RBMX S 10H 4000	040 RBMX S 10H 4050



# Type RBMX Series 4000 & 4050

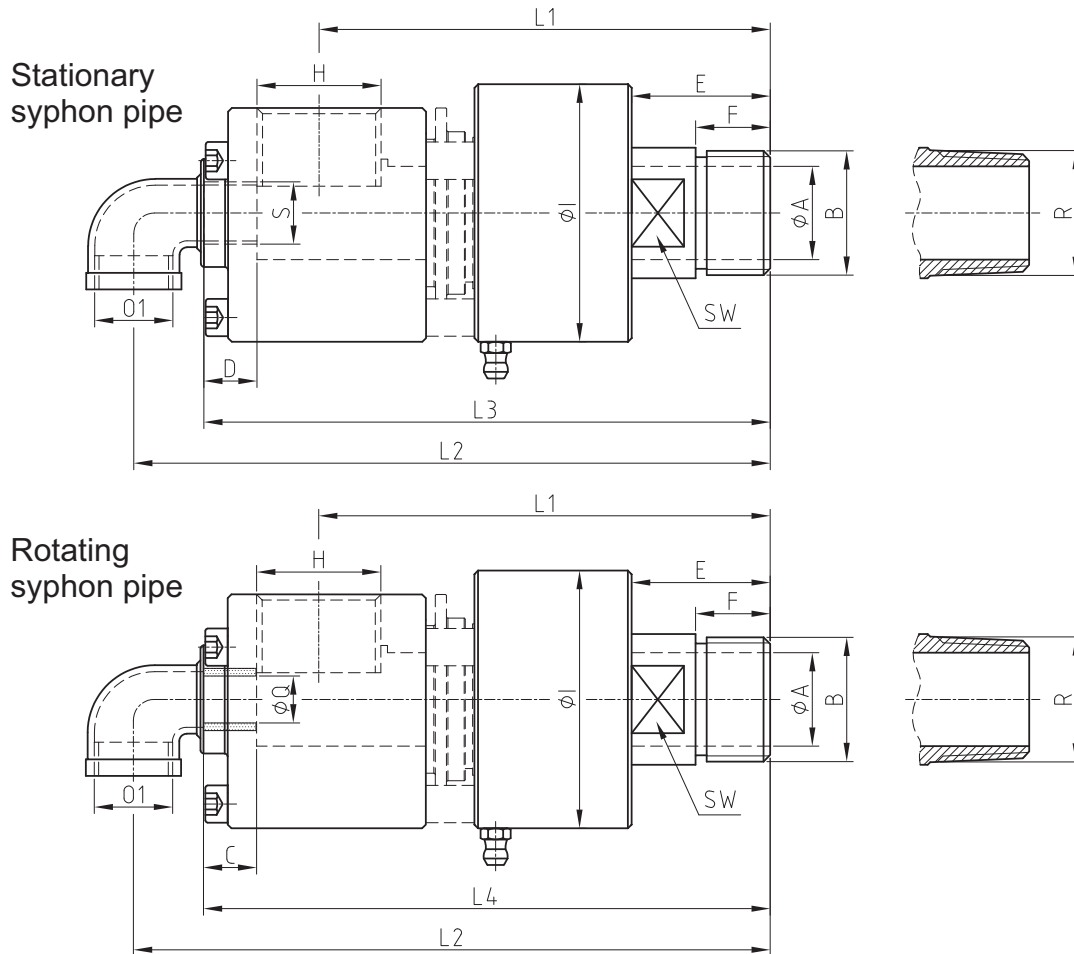


## Mono flow, with K flange connection, ND 10 - 40



ND	$\phi O h8$	$\phi P h8$	O1	$\phi A$	N	M	$\phi I$	L1	L2	Series 4000	Series 4050
										without Elbow Pipe	with Elbow Pipe
										Ordering No.	Ordering No.
10	18	17	G 3/8"	10	11	6	54	113	100	010 RBMX S 10I 4000	010 RBMX S 10I 4050
15	24	22	G 1/2"	13	12	6	54	116	100	015 RBMX S 10I 4000	015 RBMX S 10I 4050
	20.7	19.6	G 1/2"	13	15	9.5	54	116	100	015 RBMX S 10K 4000	015 RBMX S 10K 4050
20	30	28	G 3/4"	20	13	8	64	128	111	020 RBMX S 10I 4000	020 RBMX S 10I 4050
	26	24.2	G 3/4"	20	17.5	11.1	64	128	111	020 RBMX S 10K 4000	020 RBMX S 10K 4050
25	35	33	G 1"	25	13	8	69	146	119	025 RBMX S 10I 4000	025 RBMX S 10I 4050
	32.5	30.8	G 1"	25	17.5	11.1	69	146	119	025 RBMX S 10K 4000	025 RBMX S 10K 4050
32	45	43	G 1 1/4"	32	13	8	84	157	130	032 RBMX S 10I 4000	032 RBMX S 10I 4050
	45	43	G 1 1/4"	32	16	15	84	157	130	032 RBMX S 10J 4000	032 RBMX S 10J 4050
	41.3	39.6	G 1 1/4"	32	19	12.7	84	157	130	032 RBMX S 10K 4000	032 RBMX S 10K 4050
40	50	48	G 1 1/2"	40	16	10	87.5	163	134	040 RBMX S 10I 4000	040 RBMX S 10I 4050
	50	48	G 1 1/2"	40	20	20	87.5	163	134	040 RBMX S 10J 4000	040 RBMX S 10J 4050
	47.6	45	G 1 1/2"	40	22	12.7	87.5	163	134	040 RBMX S 10K 4000	040 RBMX S 10K 4050

Dual flow, with BSP or NPT thread connection, ND 10 - 40

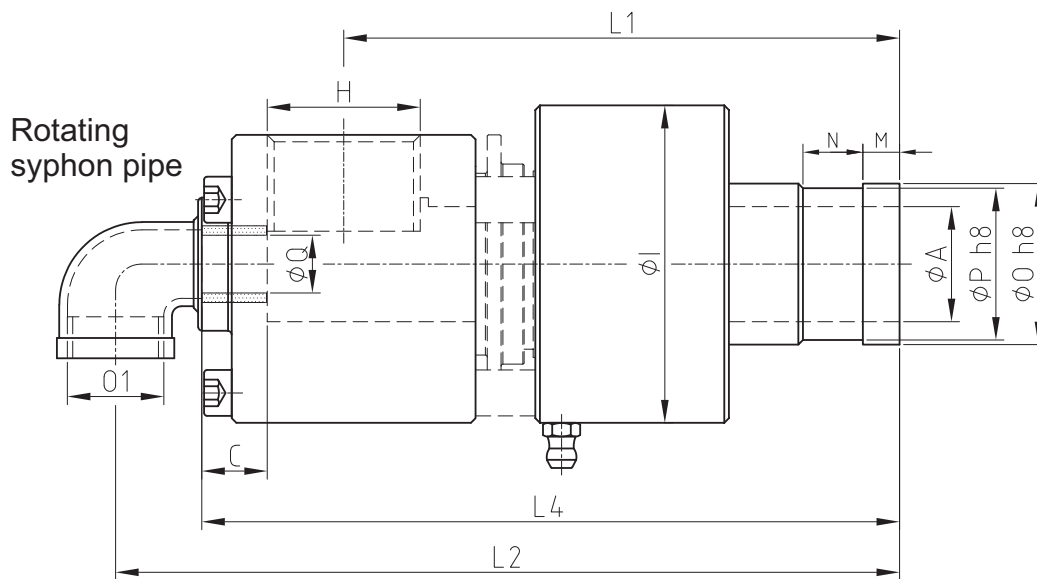
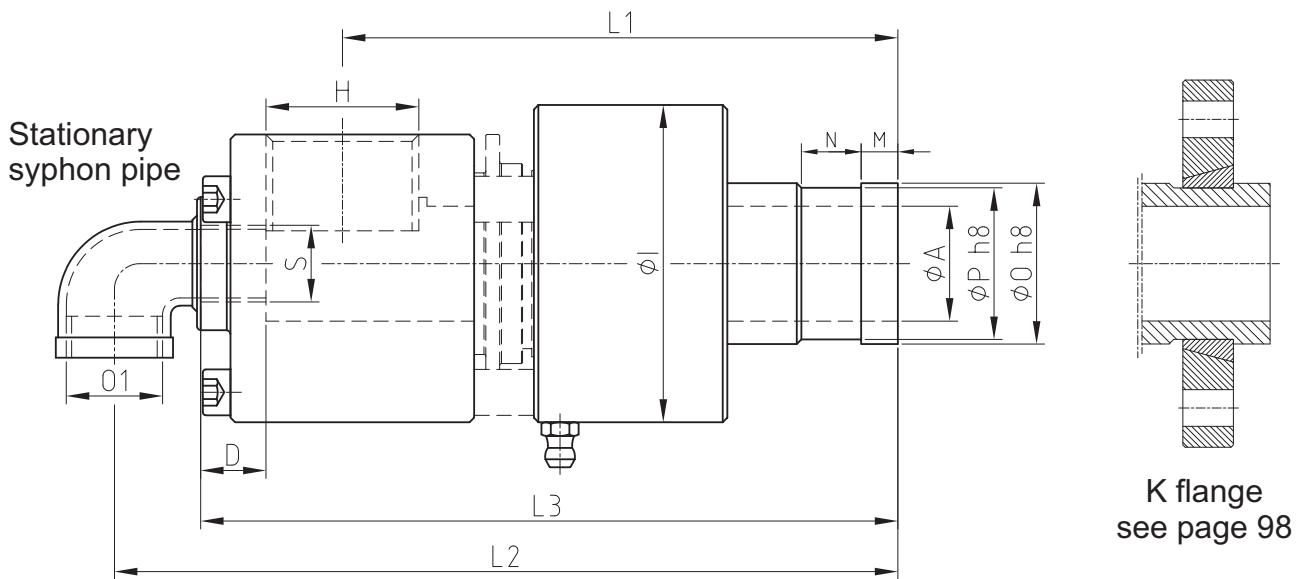


ND	B / R	Shaft Connection	H	O1	ØA	E	F	ØI	L1	L2	SW	Stationary syphon pipe				Rotating syphon pipe			
												Ordering No.	S	D	L3	Ordering No.	ØQ	C	L4
10	G 3/8"	RH	G 3/8"	1/8"	10	27	13	54	99	144	17	010 RBMX S 20RH 0050	1/8"	11	120	010 RBMX S 40RH 0050	5.8	10	120
	G 3/8"	LH	G 3/8"	1/8"	10	27	13	54	99	144	17	010 RBMX S 20LH 0050	1/8"	11	120	010 RBMX S 40LH 0050	5.8	10	120
	3/8" NPT	RH	G 3/8"	1/8"	10	27	13	54	99	144	17	010 RBMX S 20G 0050	1/8"	11	120	010 RBMX S 40G 0050	5.8	10	120
	3/8" NPT	LH	G 3/8"	1/8"	10	27	13	54	99	144	17	010 RBMX S 20H 0050	1/8"	11	120	010 RBMX S 40H 0050	5.8	10	120
15	G 1/2"	RH	G 1/2"	3/8"	13	27	13	54	99	144	21	015 RBMX S 20RH 0050	1/8"	11	120	015 RBMX S 40RH 0050	9.8	10	120
	G 1/2"	LH	G 1/2"	3/8"	13	27	13	54	99	144	21	015 RBMX S 20LH 0050	1/8"	11	120	015 RBMX S 40LH 0050	9.8	10	120
	1/2" NPT	RH	G 1/2"	3/8"	13	27	13	54	99	144	21	015 RBMX S 20G 0050	1/8"	11	120	015 RBMX S 40G 0050	9.8	10	120
	1/2" NPT	LH	G 1/2"	3/8"	13	27	13	54	99	144	21	015 RBMX S 20H 0050	1/8"	11	120	015 RBMX S 40H 0050	9.8	10	120
20	G 3/4"	RH	G 3/4"	1/2"	20	35	16	64	109	155	25	020 RBMX S 20RH 0050	1/4"	12	135	020 RBMX S 40RH 0050	12.8	10	135
	G 3/4"	LH	G 3/4"	1/2"	20	35	16	64	109	155	25	020 RBMX S 20LH 0050	1/4"	12	135	020 RBMX S 40LH 0050	12.8	10	135
	3/4" NPT	RH	G 3/4"	1/2"	20	35	16	64	109	155	25	020 RBMX S 20G 0050	1/4"	12	135	020 RBMX S 40G 0050	12.8	10	135
	3/4" NPT	LH	G 3/4"	1/2"	20	35	16	64	109	155	25	020 RBMX S 20H 0050	1/4"	12	135	020 RBMX S 40H 0050	12.8	10	135
25	G 1"	RH	G 1"	1/2"	25	37	20	69	121	170	30	025 RBMX S 20RH 0050	3/8"	15	155	025 RBMX S 40RH 0050	15.8	13.5	155
	G 1"	LH	G 1"	1/2"	25	37	20	69	121	170	30	025 RBMX S 20LH 0050	3/8"	15	155	025 RBMX S 40LH 0050	15.8	13.5	155
	1" NPT	RH	G 1"	1/2"	25	37	20	69	121	170	30	025 RBMX S 20G 0050	3/8"	15	155	025 RBMX S 40G 0050	15.8	13.5	155
	1" NPT	LH	G 1"	1/2"	25	37	20	69	121	170	30	025 RBMX S 20H 0050	3/8"	15	155	025 RBMX S 40H 0050	15.8	13.5	155
32	G 1 1/4"	RH	G 1 1/4"	3/4"	32	37	20	84	132	203	41	032 RBMX S 20RH 0050	1/2"	16	167	032 RBMX S 40RH 0050	21.8	14	167
	G 1 1/4"	LH	G 1 1/4"	3/4"	32	37	20	84	132	203	41	032 RBMX S 20LH 0050	1/2"	16	167	032 RBMX S 40LH 0050	21.8	14	167
	1 1/4" NPT	RH	G 1 1/4"	3/4"	32	37	20	84	132	203	41	032 RBMX S 20G 0050	1/2"	16	167	032 RBMX S 40G 0050	21.8	14	167
	1 1/4" NPT	LH	G 1 1/4"	3/4"	32	37	20	84	132	203	41	032 RBMX S 20H 0050	1/2"	16	167	032 RBMX S 40H 0050	21.8	14	167
40	G 1 1/2"	RH	G 1 1/2"	1"	40	43	22	87.5	139	211	46	040 RBMX S 20RH 0050	3/4"	16	178	040 RBMX S 40RH 0050	25.8	14	178
	G 1 1/2"	LH	G 1 1/2"	1"	40	43	22	87.5	139	211	46	040 RBMX S 20LH 0050	3/4"	16	178	040 RBMX S 40LH 0050	25.8	14	178
	1 1/2" NPT	RH	G 1 1/2"	1"	40	43	22	87.5	139	211	46	040 RBMX S 20G 0050	3/4"	16	178	040 RBMX S 40G 0050	25.8	14	178
	1 1/2" NPT	LH	G 1 1/2"	1"	40	43	22	87.5	139	211	46	040 RBMX S 20H 0050	3/4"	16	178	040 RBMX S 40H 0050	25.8	14	178

# Type RBMX Series 0050

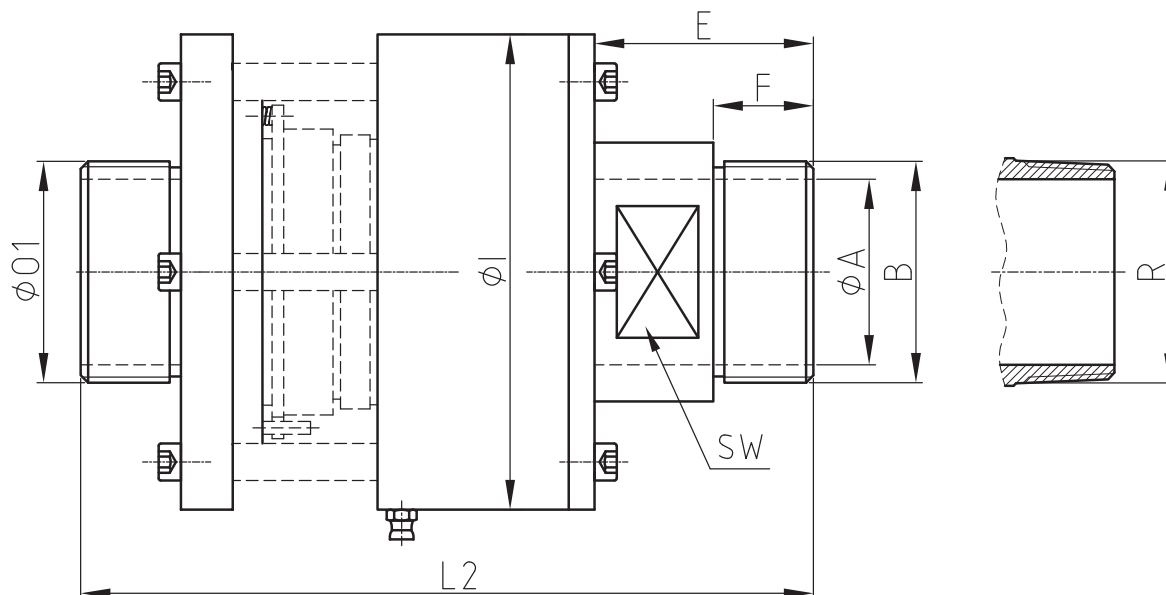


## Dual flow, with K flange connection, ND 10 - 40

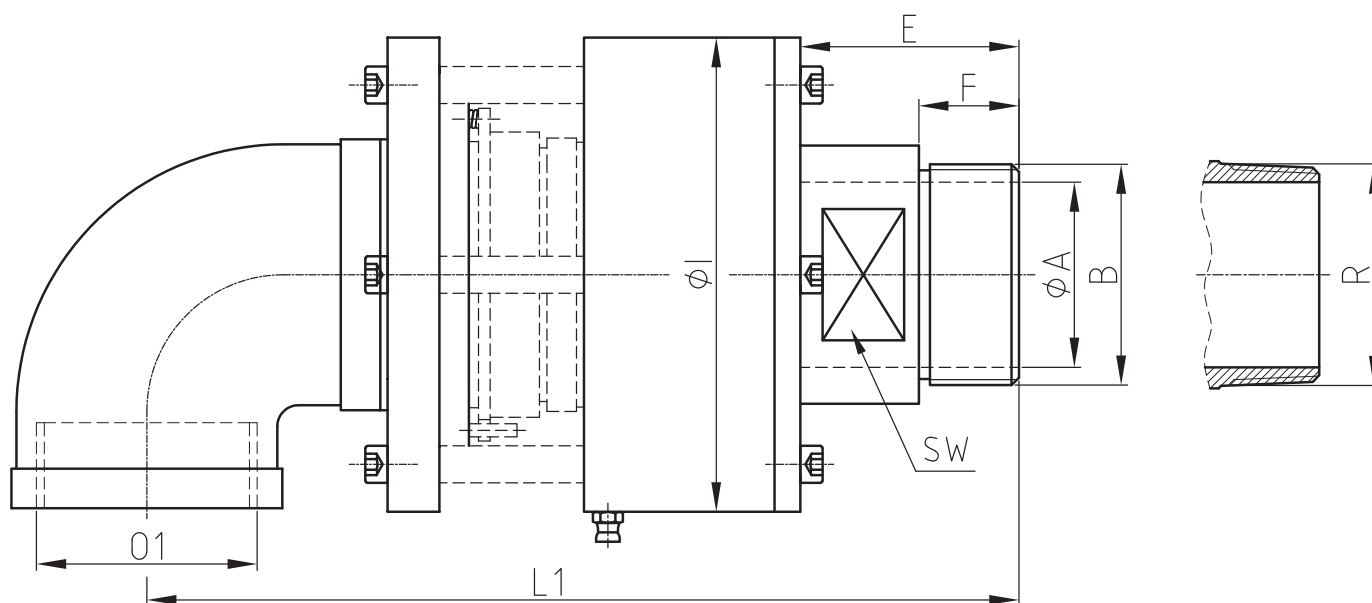


ND	ØO h8	ØP h8	H	O1	ØA	N	M	ØI	L1	L2	Stationary syphon pipe				Rotating syphon pipe			
											Ordering No.	S	D	L3	Ordering No.	ØQ	C	L4
10	18	17	G 3/8"	1/8"	10	11	6	54	99	144	010 RBMX S 20I 0050	1/8"	11	120	010 RBMX S 40I 0050	5.8	10	120
15	24	22	G 1/2"	3/8"	13	12	6	54	99	144	015 RBMX S 20I 0050	1/8"	11	120	015 RBMX S 40I 0050	9.8	10	120
	20.7	19.6	G 1/2"	3/8"	13	15	9.5	54	99	144	015 RBMX S 20K 0050	1/8"	11	120	015 RBMX S 40K 0050	9.8	10	120
20	30	28	G 3/4"	1/2"	20	13	8	64	109	155	020 RBMX S 20I 0050	1/4"	12	135	020 RBMX S 40I 0050	12.8	10	135
	26	24.2	G 3/4"	1/2"	20	17.5	11.1	64	109	155	020 RBMX S 20K 0050	1/4"	12	135	020 RBMX S 40K 0050	12.8	10	135
25	35	33	G 1"	1/2"	25	13	8	69	121	170	025 RBMX S 20I 0050	3/8"	15	155	025 RBMX S 40I 0050	15.8	13.5	155
	32.5	30.8	G 1"	1/2"	25	17.5	11.1	69	121	170	025 RBMX S 20K 0050	3/8"	15	155	025 RBMX S 40K 0050	15.8	13.5	155
32	45	43	G 1 1/4"	3/4"	32	13	8	84	132	203	032 RBMX S 20I 0050	1/2"	16	167	032 RBMX S 40I 0050	21.8	14	167
	45	43	G 1 1/4"	3/4"	32	16	15	84	132	203	032 RBMX S 20J 0050	1/2"	16	167	032 RBMX S 40J 0050	21.8	14	167
	41.3	39.6	G 1 1/4"	3/4"	32	19	12.7	84	132	203	032 RBMX S 20K 0050	1/2"	16	167	032 RBMX S 40K 0050	21.8	14	167
40	50	48	G 1 1/2"	1"	40	16	10	87.5	139	211	040 RBMX S 20I 0050	3/4"	16	178	040 RBMX S 40I 0050	25.8	14	178
	50	48	G 1 1/2"	1"	40	20	20	87.5	139	211	040 RBMX S 20J 0050	3/4"	16	178	040 RBMX S 40J 0050	25.8	14	178
	47.6	45	G 1 1/2"	1"	40	22	12.7	87.5	139	211	040 RBMX S 20K 0050	3/4"	16	178	040 RBMX S 40K 0050	25.8	14	178

Mono flow, with BSP or NPT thread connection, ND 50



Series 4000



Series 4050

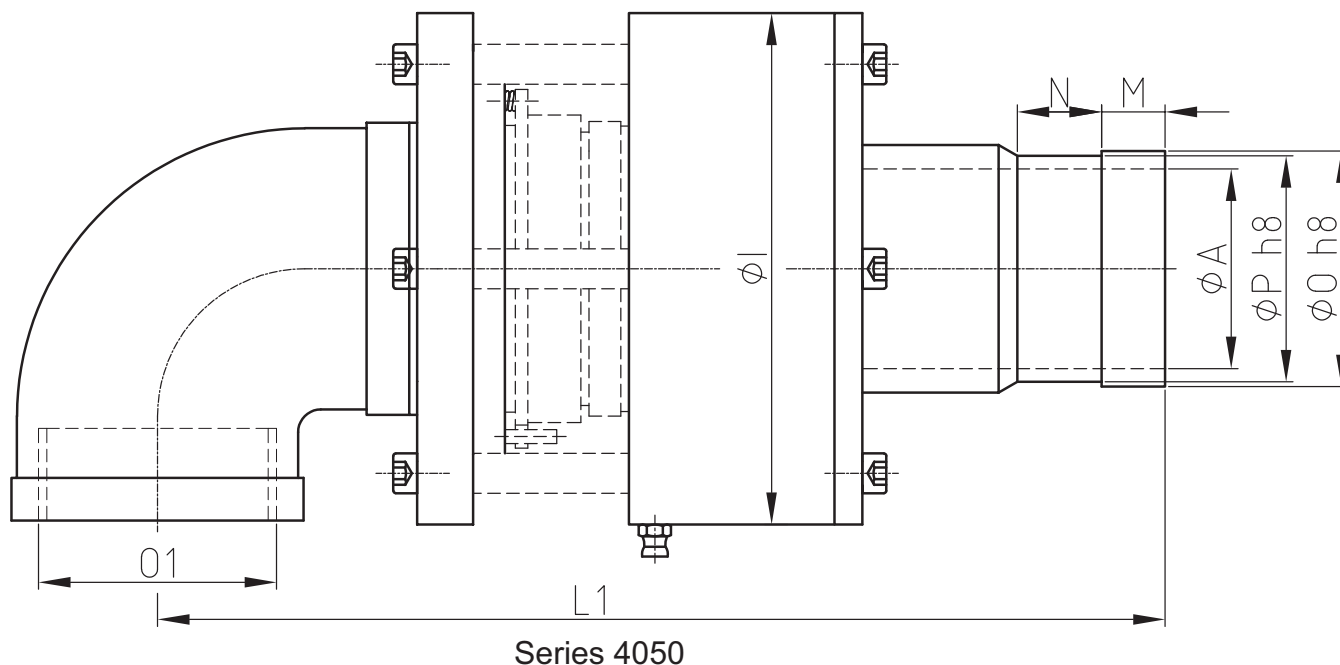
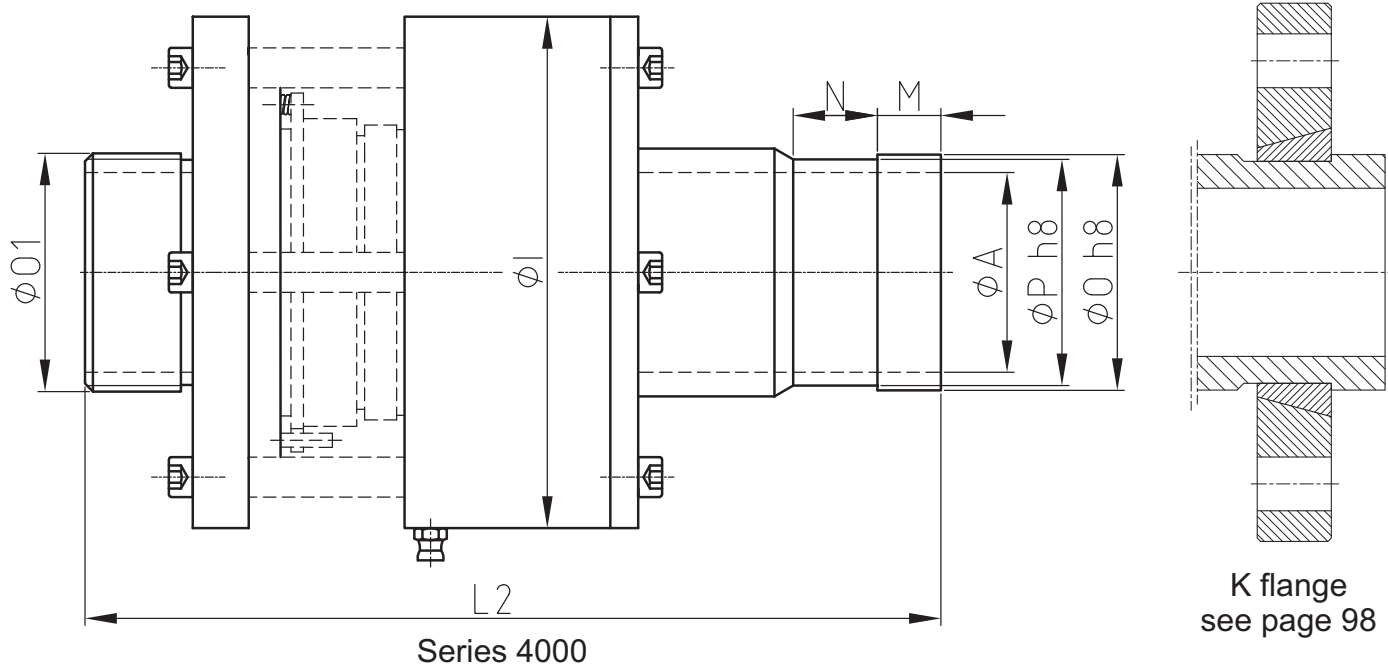
ND	B / R Shaft Connection	O1	ØA	E	F	ØI	L1	L2	SW	Series 4000 without Elbow Pipe	Series 4050 with Elbow Pipe
										Ordering No.	Ordering No.
50	G 2" RH	G 1 1/4"	50	59	27	128	235	197	65	050 RBMX S 10RH 4000	050 RBMX S 10RH 4050
	G 2" LH	G 1 1/4"	50	59	27	128	235	197	65	050 RBMX S 10LH 4000	050 RBMX S 10LH 4050
	2" NPT RH	G 1 1/4"	50	59	27	128	235	197	65	050 RBMX S 10G 4000	050 RBMX S 10G 4050
	2" NPT LH	G 1 1/4"	50	59	27	128	235	197	65	050 RBMX S 10H 4000	050 RBMX S 10H 4050



# Type RBMX Series 4000 & 4050

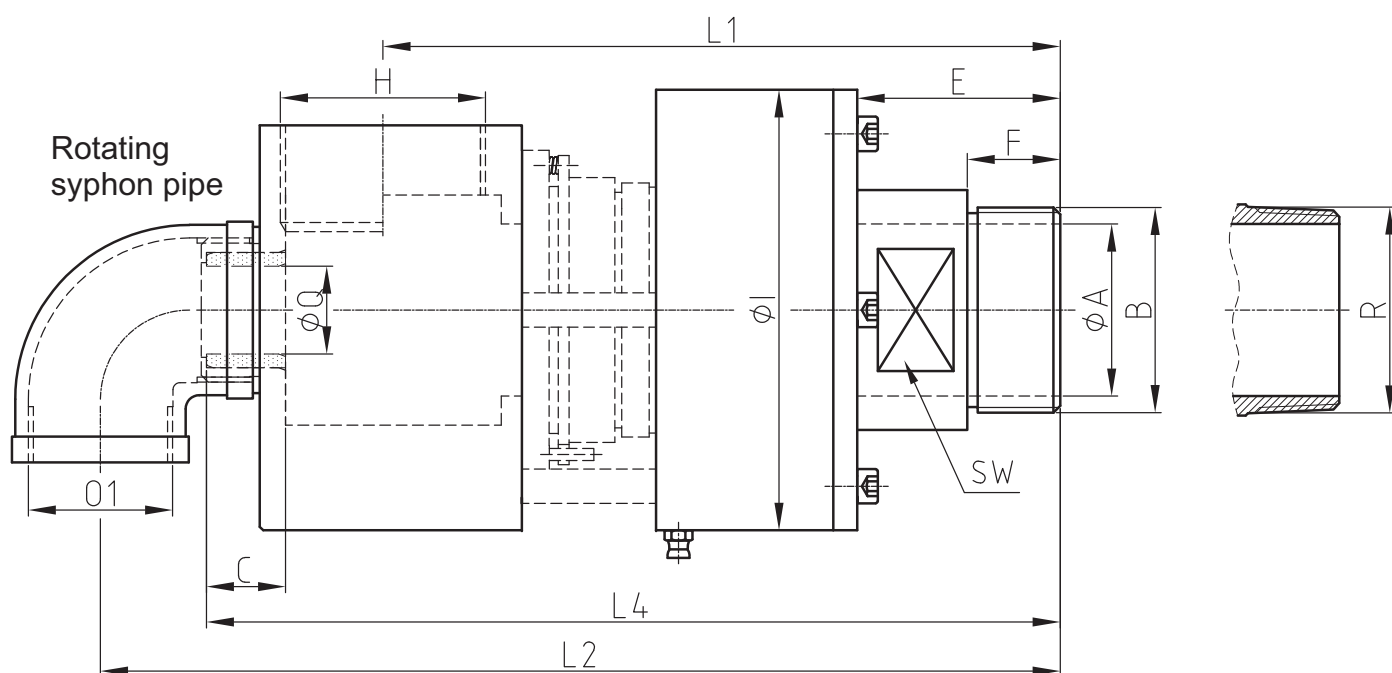
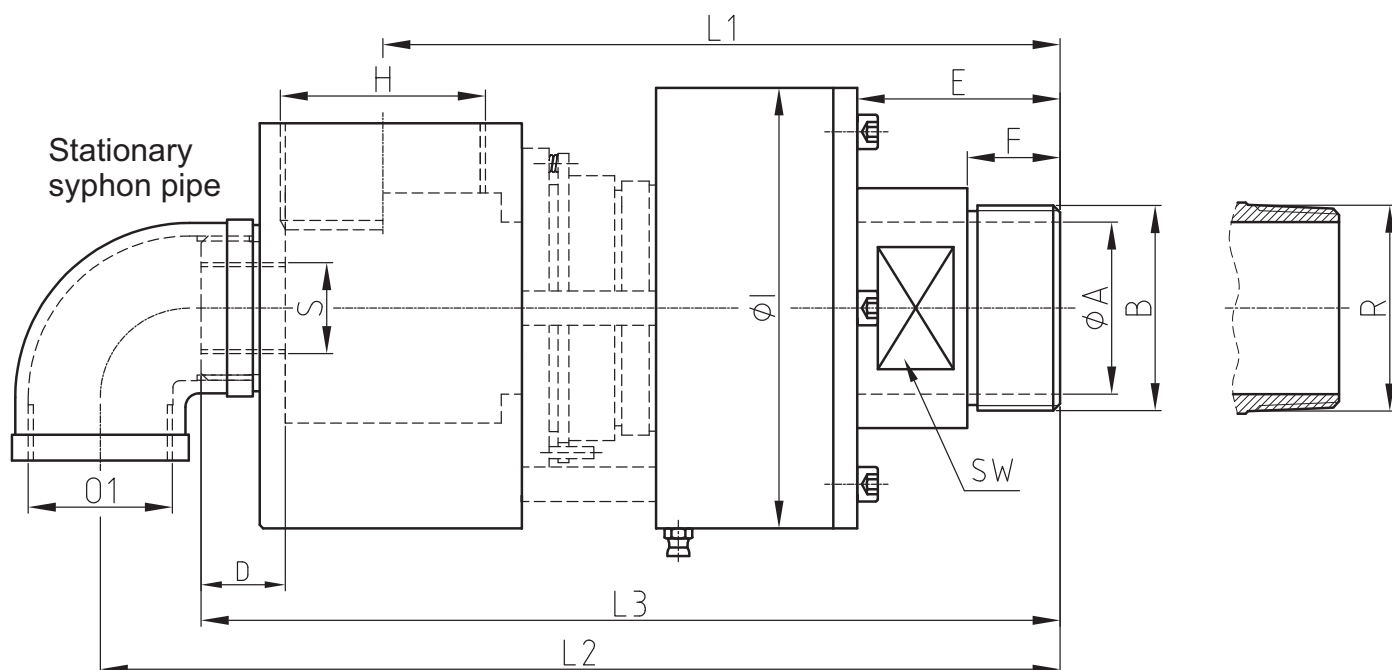


Mono flow, with K flange connection, ND 50



ND	$\phi O h8$	$\phi P h8$	O1	$\phi A$	N	M	$\phi 1$	L1	L2	Series 4000 without Elbow Pipe	Series 4050 with Elbow Pipe
										Ordering No.	Ordering No.
50	65	63	G 1 1/4"	50	16	10	128	235	197	050 RBMX S 10I 4000	050 RBMX S 10I 4050
	65	63	G 1 1/4"	50	22	25	128	235	197	050 RBMX S 10J 4000	050 RBMX S 10J 4050
	59.1	56.6	G 1 1/4"	50	21.1	15.9	128	235	197	050 RBMX S 10K 4000	050 RBMX S 10K 4050

Dual flow, with BSP or NPT thread connection, ND 50

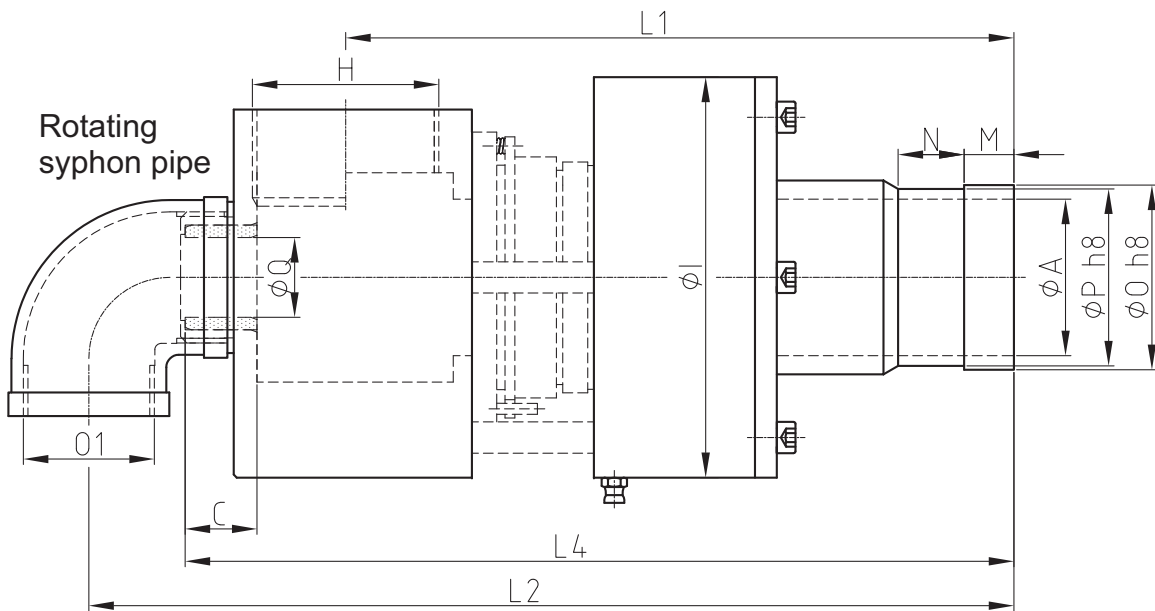
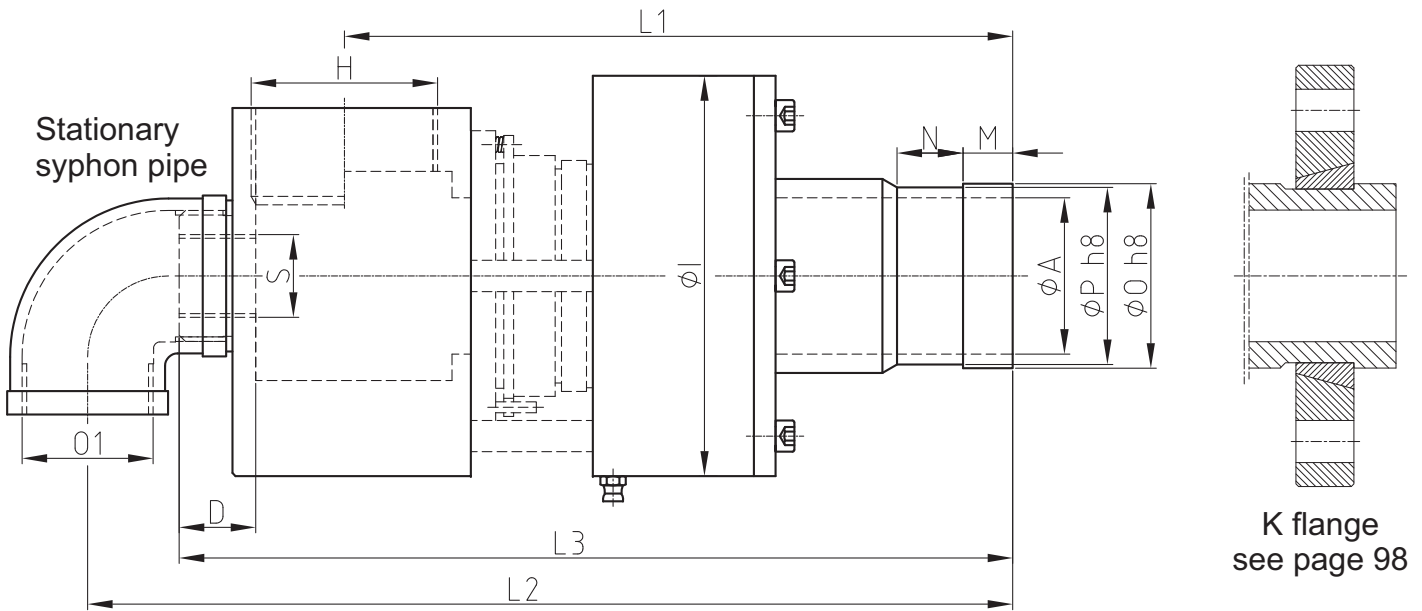


ND	B / R Shaft Connection		H	O1	ØA	E	F	ØI	L1	L2	SW	Stationary syphon pipe			Rotating syphon pipe				
												Ordering No.	S	D	L3	Ordering No.	ØQ	C	L4
50	G 2"	RH	G 2"	G 1 1/4"	50	59	27	128	197	279	65	050 RBMX S 20RH 13050	1"	24.5	250	050 RBMX S 40RH 13050	32	27	252
	G 2"	LH	G 2"	G 1 1/4"	50	59	27	128	197	279	65	050 RBMX S 20LH 13050	1"	24.5	250	050 RBMX S 40LH 13050	32	27	252
	2" NPT	RH	G 2"	G 1 1/4"	50	59	27	128	197	279	65	050 RBMX S 20G 13050	1"	24.5	250	050 RBMX S 40G 13050	32	27	252
	2" NPT	LH	G 2"	G 1 1/4"	50	59	27	128	197	279	65	050 RBMX S 20H 13050	1"	24.5	250	050 RBMX S 40H 13050	32	27	252

# Type RBMX Series 13050

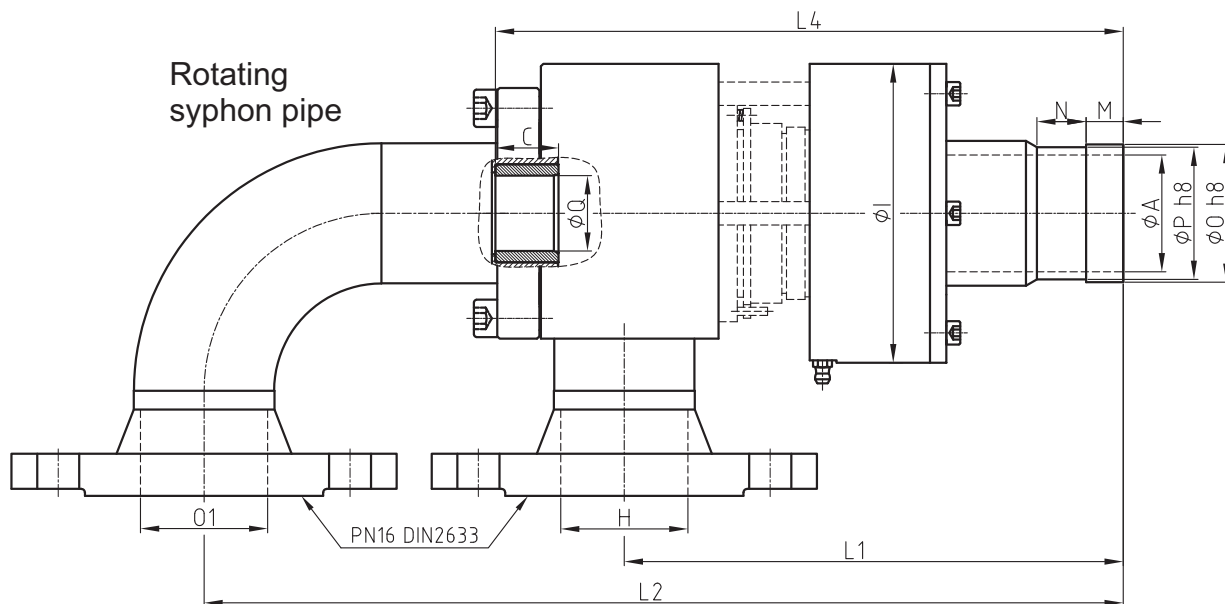
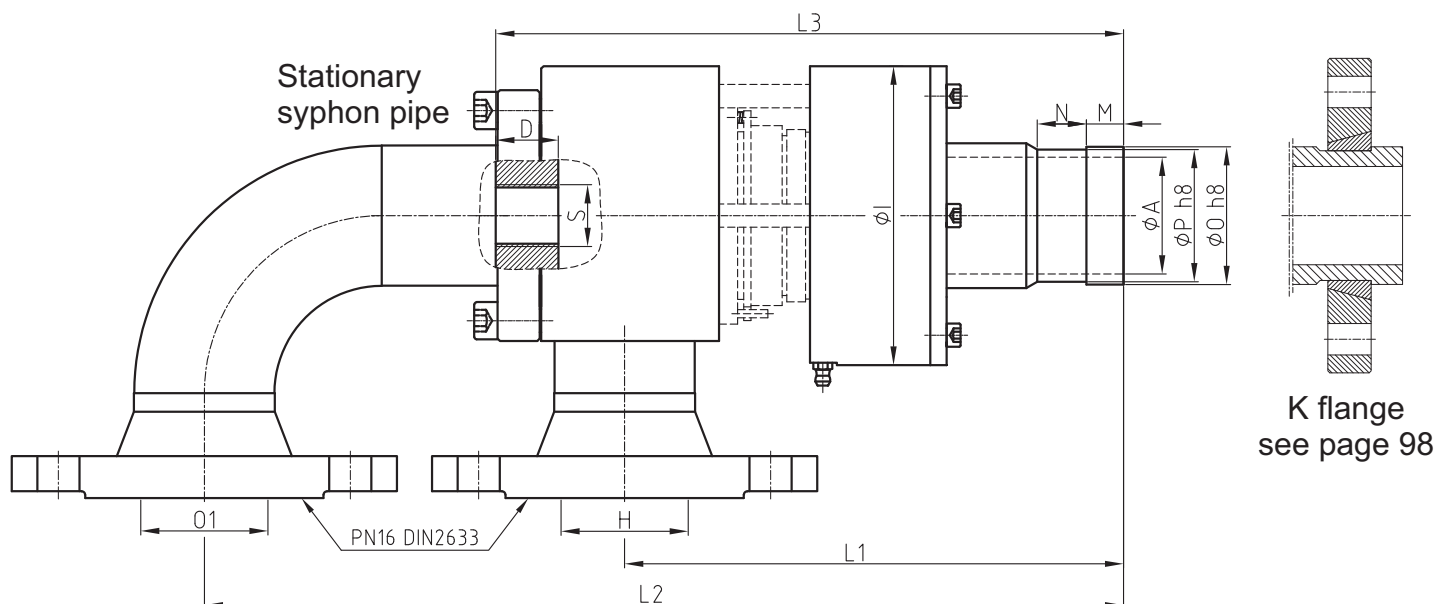


Dual flow, with K flange connection, ND 50



ND	ØO h8 Shaft Connection	ØP h8	H	O1	ØA	N	M	ØI	L1	L2	Stationary syphon pipe			Rotating syphon pipe				
											Ordering No.	S	D	L3	Ordering No.	ØQ	C	L4
50	65	63	G 2"	G 1 1/4"	50	16	10	128	197	279	050 RBMX S 20I 13050	1"	24.5	250	050 RBMX S 40I 13050	32	27	252
	65	63	G 2"	G 1 1/4"	50	22	25	128	197	279	050 RBMX S 20J 13050	1"	24.5	250	050 RBMX S 40J 13050	32	27	252
	59.1	56.6	G 2"	G 1 1/4"	50	21.1	15.9	128	197	279	050 RBMX S 20K 13050	1"	24.5	250	050 RBMX S 40K 13050	32	27	252

## Dual flow, with K flange connection, ND 50

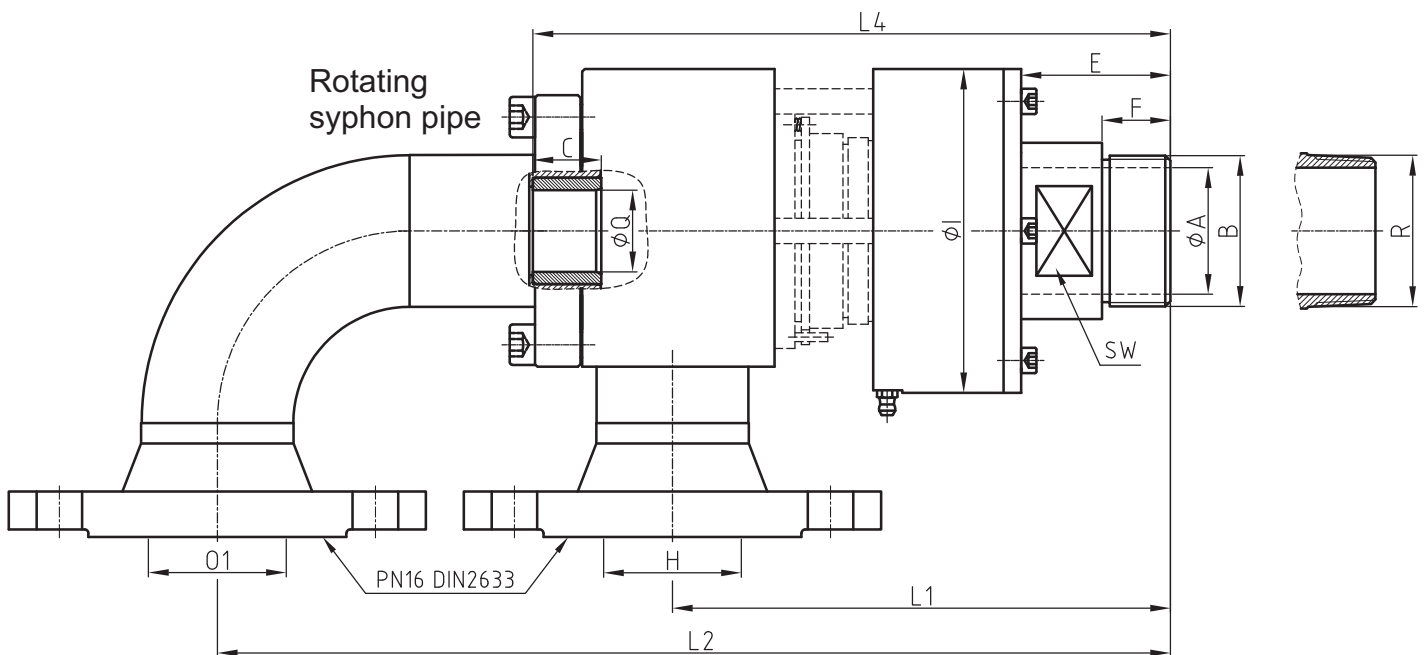
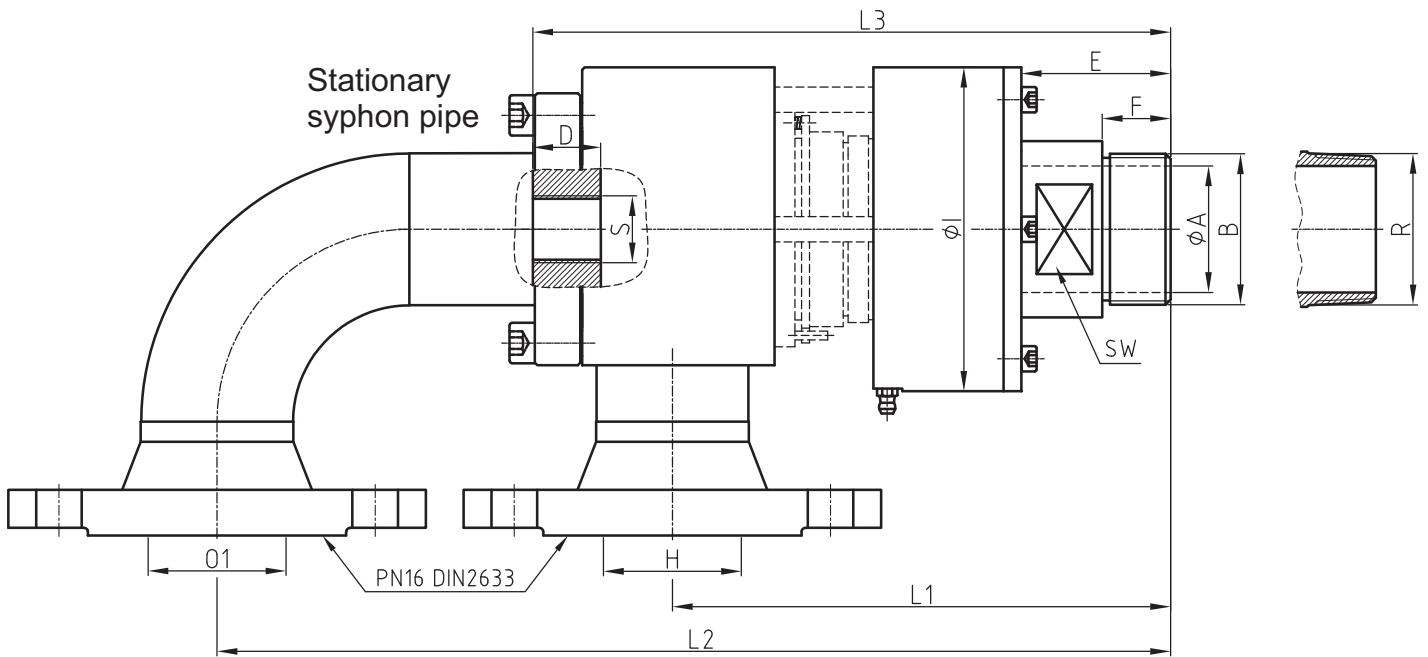


ND	ØO h8 Shaft Connection	ØP h8	H	O1	ØA	N	M	ØI	L1	L2	Stationary syphon pipe			Rotating syphon pipe				
											Ordering No.	S	D	L3	Ordering No.	ØQ	C	L4
50	65	63	DN 50	DN 50	50	16	10	128	214	394	050 RBMX S 20I 13060	1"	24.5	250	050 RBMX S 40I 13060	32	27	252
	65	63	DN 50	DN 50	50	22	25	128	214	394	050 RBMX S 20J 13060	1"	24.5	250	050 RBMX S 40J 13060	32	27	252
	59.1	56.6	DN 50	DN 50	50	21.1	15.9	128	214	394	050 RBMX S 20K 13060	1"	24.5	250	050 RBMX S 40K 13060	32	27	252

# Type RBMX Series 13060



Dual flow, with BSP or NPT thread connection, ND 50



ND	B / R Shaft Connection		H	O1	ØA	E	F	ØI	L1	L2	SW	Stationary syphon pipe				Rotating syphon pipe							
												Ordering No.			S	D	L3	Ordering No.			ØQ	C	L4
50	G 2"	RH	DN 50	DN 50	50	59	27	128	197	377	65	050 RBMX S 20RH 13060			1"	24.5	250	050 RBMX S 40RH 13060			32	27	252
	G 2"	LH	DN 50	DN 50	50	59	27	128	197	377	65	050 RBMX S 20LH 13060			1"	24.5	250	050 RBMX S 40LH 13060			32	27	252
	2" NPT	RH	DN 50	DN 50	50	59	27	128	197	377	65	050 RBMX S 20G 13060			1"	24.5	250	050 RBMX S 40G 13060			32	27	252
	2" NPT	LH	DN 50	DN 50	50	59	27	128	197	377	65	050 RBMX S 20H 13060			1"	24.5	250	050 RBMX S 40H 13060			32	27	252



